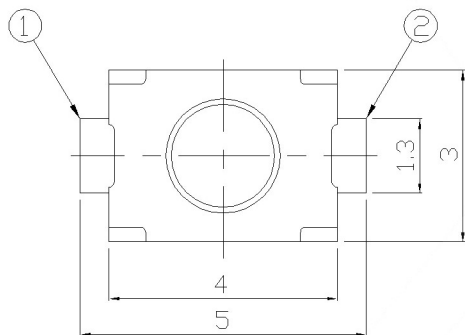
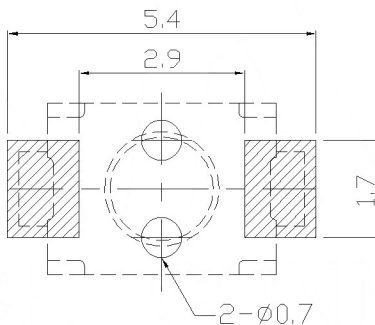


SPECIFICATION

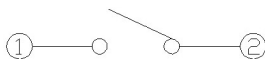
Contact Rating: 50mA, 12V DC
Contact Resistance: 100mΩ max
Insulation Resistance: 100mΩ min. 500V DC
Dielectric Strength: 250V AC/1minute
Travel: 0.13mm
Operating Temp: -30°C ~ +85°C
Storage Temp: -30°C ~ +80°C



P.C.B MOUNTING PATTERN DIMENSION
 The following soldering patterns are recommended for reflow soldering



CIRCUIT DIAGRAM



PAPT NO	TS-1185-X-X-X-B
Operating Force	A: 100gf B: 160gf C: 260gf
Height	H: A: 2.0 B: 2.5
Fixed column	A: With B: Without
Keystake	A: PA46 B: Silica gel

⑤	Terminal	—	2	Brass (0.30t)	Plating silvering	—
④	Contact	—	1	F.ag/Sus	Natural	—
③	Base	—	1	Lcp	—	—
②	Cover	—	1	Brass	Plating Nickel	—
①	Keystake	—	1	Silica gel	—	—
ITEM	PAPT NAMF	TER,NO	QTY	MATERIAL	FINISHING	REMARK

					units: mm	DSND	DATE	SCALE: N/A	MODEL TYPE:
					tolerance:	DWN	DATE	VIEW:	TACT SWITCH
					X.X ±0.2mm	CHKD	DATE	UNIT: mm	PART NO.:
					X.XX ±0.1mm	APPD	DATE	SIZE: A4	DWG NO.:
					X.XXX ±0.05mm				TS-1185-X-X-X-B
					UNSPECIFIED TOLERANCES				WEIGHT
						KOSOD TECHNOLOGY CO., LTD			1.0g
									SHEET
									1/1
									REVISION
									A0