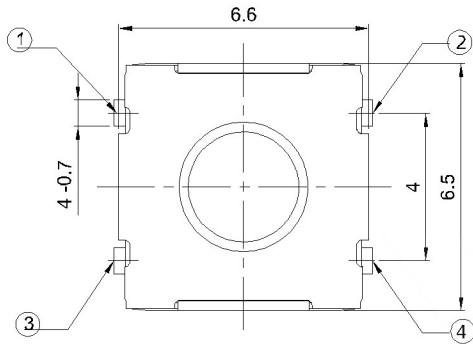
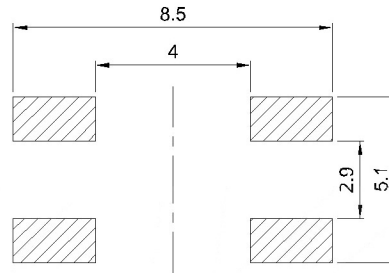


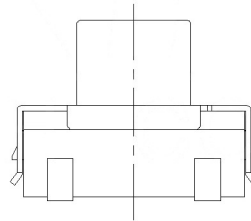
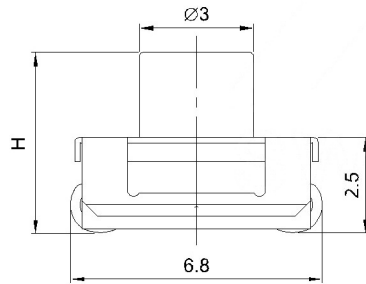
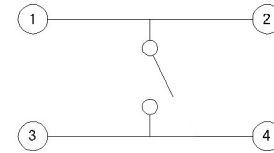
IP65



SMD REFLOW PATTERN (N/S : ±0.1)



CIRCUIT DIAGRAM



SPECIFICATION

Contact Rating : 50mA, 12V DC
 Contact Resistance : 100mΩ max
 Insulation Resistance : 100mΩ min. 500V DC
 Dielectric Strength : 250V AC/1minute
 Travel : 0.25mm
 Operating Temp : -30°C ~ +85°C
 Storage Temp : -30°C ~ +80°C

PAPT NO	TS-1158UB-X-X-X
Operating Force	B:160gf C:260gf E:400gf
Height	H:A:3.1 B:3.5 C:4.3 D:5.0
color	BL:blue W:white

⑤	Terminal	—	4	Brass (0.30t)	Plating silvering	—
④	Contact	—	1	F.ag/Sus	Natural	—
③	Base	—	1	Pa46		—
②	Cover	—	1	Spcc	Plating Nickel	—
①	Keystake	—	1	Silica gel		—
ITEM	PAPT NAMF	TER,NO	QTY	MATERIAL	FINISHING	REMARK

DSND		DATE		SCALE: N/A	MODEL TYPE:		
DWN		DATE		VIEW:	TACT SWITCH		
CHKD		DATE		UNIT: mm	PART NO.:		
APPD		DATE		SIZE: A4	DWG NO.:		
					TS-1158UB-X-X-X		
					WEIGHT	SHEET	REVISION
					1.0g	1/1	A0

units:	mm			
tolerance:	X.X ±0.2mm			
	X.XX ±0.1mm			
	X.XXX ±0.05mm			
UNSPECIFIED TOLERANCES				
MARK	DESCRIPTION	DATE	REVISED	APPROVED
REVISIONS				
www.bodongkaiguan.net www.ksdkg.com				

KOSOD TECHNOLOGY CO., LTD