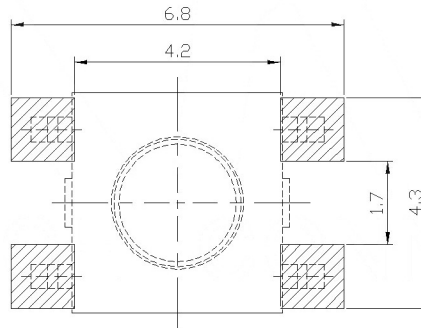
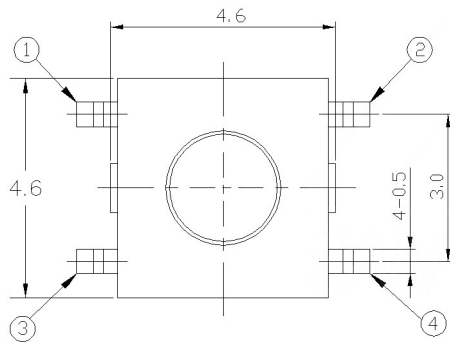


CIRCUIT DIAGRAM

SPECIFICATION

Contact Rating: 50mA, 12V DC
Contact Resistance: 100mΩ max
Insulation Resistance: 100mΩ min. 500V DC
Dielectric Strength: 250V AC/1minute
Travel: 0.25mm
Operating Temp: -30°C ~ +85°C
Storage Temp: -30°C ~ +80°C



P.C.B LAND PATTERN

PAPT NO	TS-1127-X
Operating Force	A: 100gf B: 160gf C: 260gf
Height	H: 1.5

ITEM	PAPT NAMF	TER,NO	QTY	MATERIAL	FINISHING	REMARK
⑤	Terminal	—	4	Brass (0.30t)	Plating silvering	—
④	Contact	—	1	F.ag/Sus	Natural	—
③	Base	—	1	Pa46	—	—
②	Cover	—	1	Spcc	Plating Nickel	—
①	Keystake	—	1	Pa46	—	—

MARK	DESCRIPTION	DATE	REVISED	APPROVED	UNSPECIFIED TOLERANCES	DSND	DATE	SCALE: N/A	MODEL TYPE:
Δ X					units: mm	DWN	DATE	VIEW: ④	TACT SWITCH
Δ X					tolerance:	CHKD	DATE	UNIT: mm	PART NO.:
Δ X					X.X ±0.2mm	APPD	DATE	SIZE: A4	DWG NO.:
					X.XX ±0.1mm				TS-1127-X
					X.XXX ±0.05mm				WEIGHT
									1.0g
									SHEET
									1/1
									REVISION
									A0