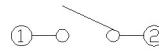


CIRCUIT DIAGRAM



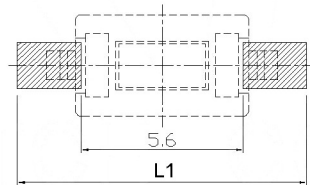
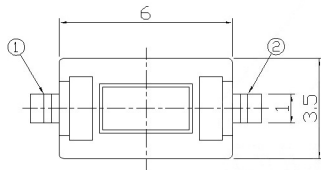
P	L	L1
A	8.0	10
B	8.5	11
C	9.0	12
D	9.5	13
E	10	14

SPECIFICATION

Contact Rating : 50mA, 12V DC
 Contact Resistance : 100mΩ max
 Insulation Resistance : 100mΩ min. 500V DC
 Dielectric Strength : 250V AC/1minute
 Travel : 0.25mm
 Operating Temp : -20°C ~ +70°C
 Storage Temp : -30°C ~ +80°C

P.C.B MOUNTING PATTERN DIMENSION

The following soldering patterns are recommended for reflow soldering



PAPT NO	TS-1101S-X-X-B-X-X
Operating Force	A:100gf B:160gf C:260gf
Height	H:A:1.3 B:5.0 C:6.0 D:7.0
Fixed column	A:With B:without
color	B:black W:white
Pin pitch	p

⑤	Terminal	—	2	Brass (0.30t)	Plating silvering	—
④	Contact	—	1	F.ag/Sus	Natural	—
③	Base	—	1	Lcp	—	—
②	Cover	—	1	Spcc	Plating Nickel	—
①	Keystake	—	1	Pa46	—	—
ITEM	PAPT NAMF	TER.NO	QTY	MATERIAL	FINISHING	REMARK

MARK	DESCRIPTION	DATE	REVISED	APPROVED	units: mm tolerance: X.X ±0.2mm X.XX ±0.1mm X.XXX ±0.05mm
					UNSPECIFIED TOLERANCES
					REVISIONS
	www.bodongkaiguan.net				www.ksdkg.com

DSND		DATE		SCALE: N/A	MODEL TYPE: TACT SWITCH
DWN		DATE		VIEW:	PART NO.:
CHKD		DATE		UNIT: mm	DWG NO.:
APPD		DATE		SIZE: A4	TS-1101S-X-X-B-X-X
				Kosod Technology Co., Ltd.	WEIGHT 1.0g
					SHEET 1/1
					REVISION A0