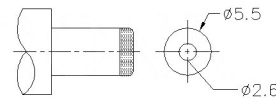
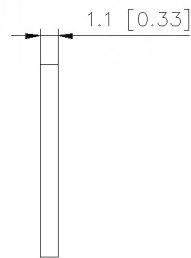
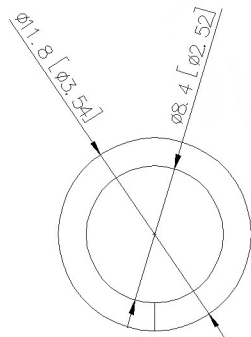


SCHEMATIC	
Model	DC-026M
Center Pin	$\phi 2.0$ mm
	$\phi 2.5$ mm



MATING PLUG  
Jack Insertion Depth: 9.0 mm

	MATERIAL	PLATING
axle sleeve	Brass	tin
plastic	Pbt	
center pin	Brass	tin
terminal 1	Brass	tin
terminal 2	Brass	tin
terminal 3	Phosphor Bronze	tin

REVISIONS					UNSPECIFIED TOLERANCES	DSND	DATE	SCALE: N/A	MODEL TYPE:	
$\Delta$ X					ANGULAR				DC POWER JACK	
$\Delta$ X					$\pm 5^\circ$				PART NO.:	
$\Delta$ X					X.X $\pm 0.2$ mm				DWG NO.:	
$\Delta$ X					X.XX $\pm 0.1$ mm				DC-026M-5A-2.5	
MARK	DESCRIPTION	DATE	REVISED	APPROVED	X.XXX $\pm 0.05$ mm	APPD	DATE	SIZE: A4	WEIGHT	
www.bodongkaiguan.net www.ksdkg.com					KOSOD TECHNOLOGY CO., LTD				1.0g	SHEET
									1/1	REVISION
										A0