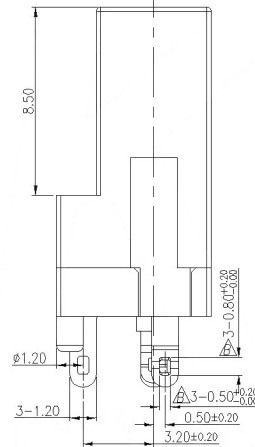
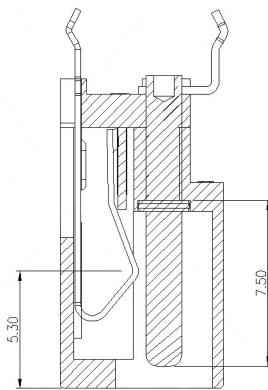
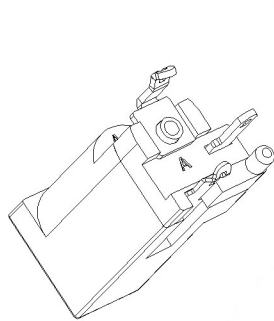
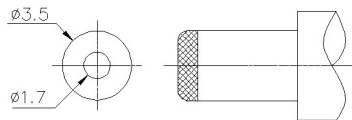


PCB LAYOUT TOP VIEW
TOLERANCES:±0.05



- NOTES:
- CONTACT CURRENT RATING: 1A.
 - CONTACT RESISTANCE: 50 mΩ MAX.;
 - INSULATION RESISTANCE: 100MΩ MIN.;
 - DIELECTRIC WITHSTANDING: 500V AC MIN.;
 - DURABILITY: 5,000 CYCLES MIN.;
 - CONNECTOR MATING FORCES: 29.4N (3.00kgf) MAX.;
 - CONNECTOR UNMATING FORCES: 4.94N(0.50kgf) MIN.;

SCHEMATIC	
Center Pin	<ul style="list-style-type: none"> Ø1.0 mm Ø1.3 mm Ø1.65 mm



	MATERIAL	PLATING
center pin	Brass	tin
terminal 1	Brass	tin
terminal 2	Phosphor Bronze	tin
terminal 3	Brass	tin
plastic	Pbt	

MARK	DESCRIPTION	DATE	REVISED	APPROVED	ANGLAR	±5°
Δ X					X.X	±0.2mm
Δ X					X.XX	±0.1mm
Δ X					X.XXX	±0.05mm
					UNSPECIFIED TOLERANCES	

DSND	DATE	SCALE: N/A	MODEL TYPE:
DWN	DATE	VIEW:	DC POWER JACK
CHKD	DATE	UNIT: mm	PART NO.:
APPD	DATE	SIZE: A4	DWG NO.:
			DC-002H-2.5A-1.65
Kosod Technology Co., Ltd.			WEIGHT
			1.0g
			SHEET
			1/1
			REVISION
			A0