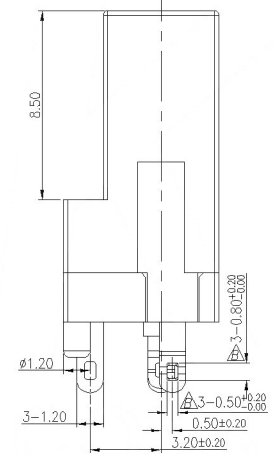
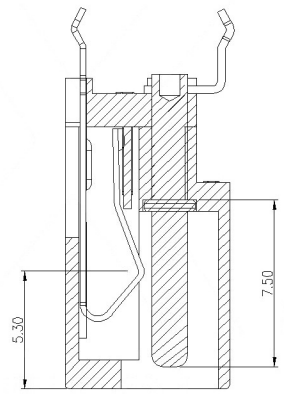
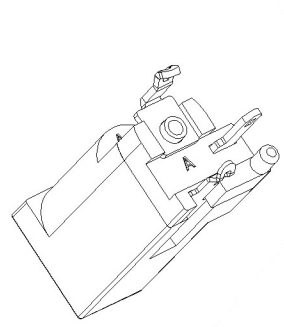
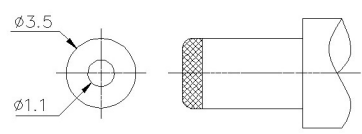


PCB LAYOUT TOP VIEW
TOLERANCES: ±0.05



- NOTES:
- CONTACT CURRENT RATING: 1A.
 - CONTACT RESISTANCE: 50 mΩ MAX.;
 - INSULATION RESISTANCE: 100MΩ MIN.;
 - DIELECTRIC WITHSTANDING: 500V AC MIN.;
 - DURABILITY: 5,000 CYCLES MIN.;
 - CONNECTOR MATING FORCES: 29.4N (3.00Kgf) MAX.;
 - CONNECTOR UNMATING FORCES: 4.94N(0.50kgf) MIN.;

SCHEMATIC	
Center Pin	Ø1.0 mm
	Ø1.3 mm
	Ø1.65 mm



	MATERIAL	PLATING
center pin	Brass	tin
terminal 1	Brass	tin
terminal 2	Phosphor Bronze	tin
terminal 3	Brass	tin
plastic	Pbt	

DSND		DATE		SCALE: N/A	MODEL TYPE: DC POWER JACK
DWN		DATE		VIEW:	PART NO.:
CHKD		DATE		UNIT: mm	DWG NO.:
APPD		DATE		SIZE: A4	DC-002H-2.5A-1.0
UNSPECIFIED TOLERANCES					WEIGHT
www.bodongkaiguan.net www.ksdkg.com					1.0g
KOSOD TECHNOLOGY CO., LTD					SHEET
					1/1
					REVISION
					A0

MARK	DESCRIPTION	DATE	REVISED	APPROVED	ANGLAR	±5°
△ X					X.X	±0.2mm
△ X					X.XX	±0.1mm
△ X					X.XXX	±0.05mm