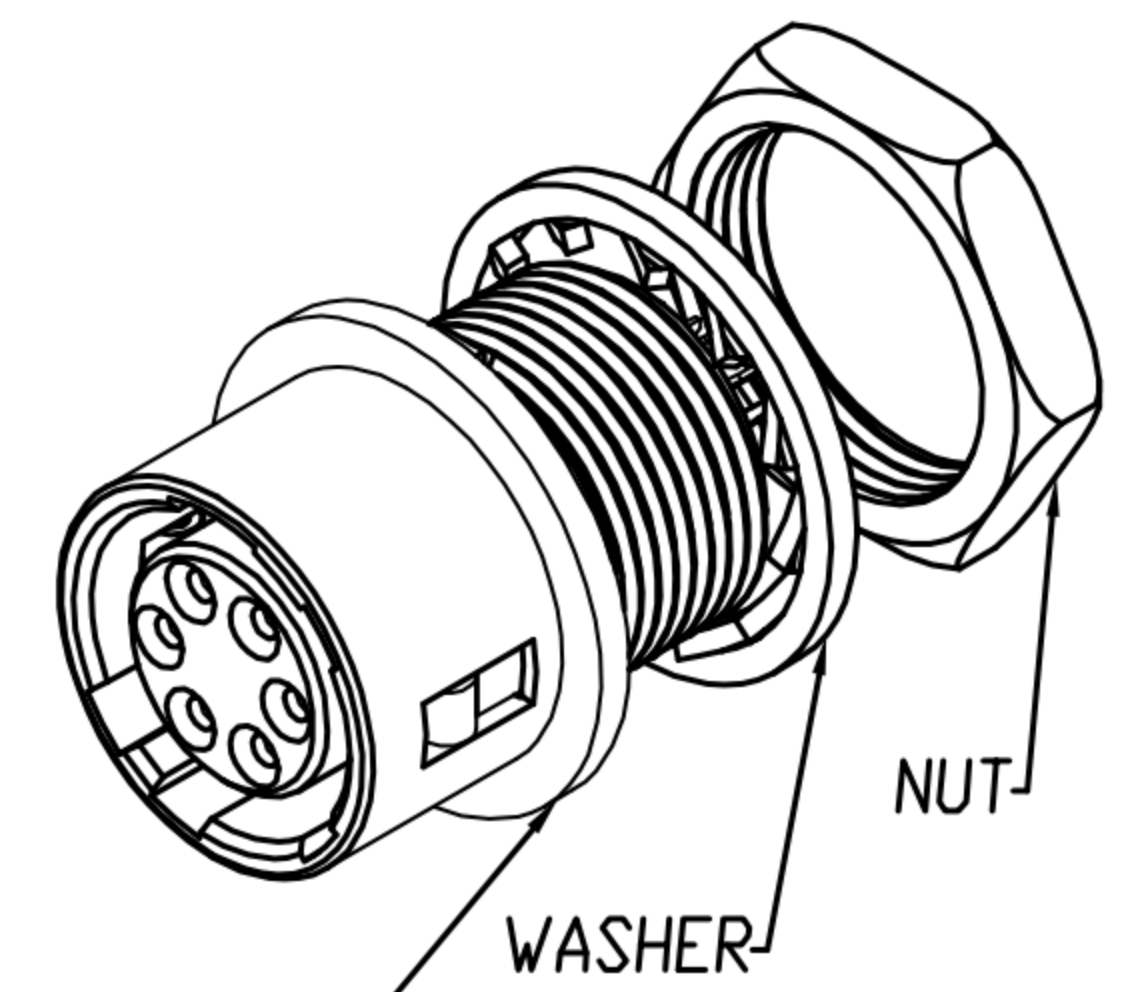
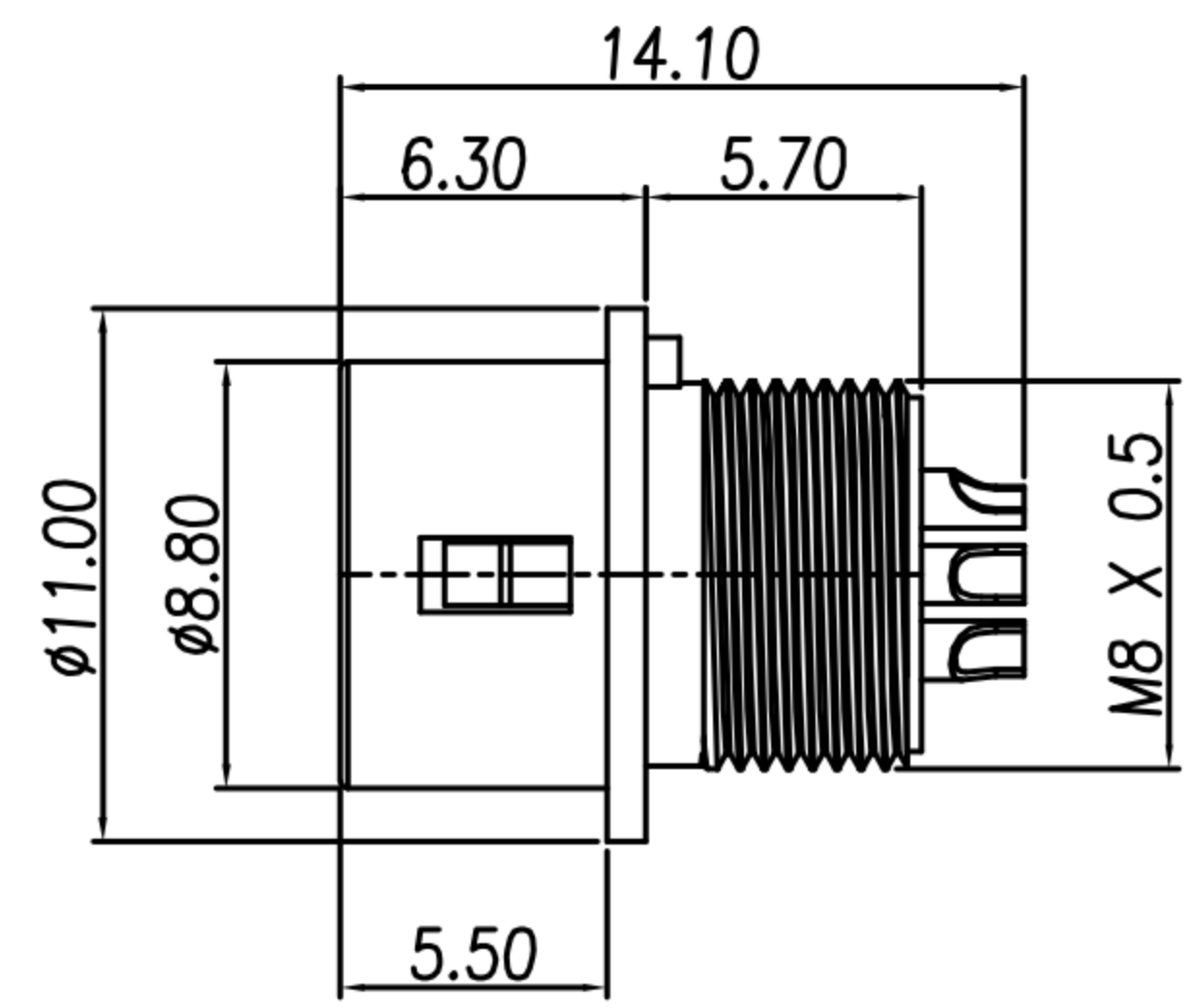
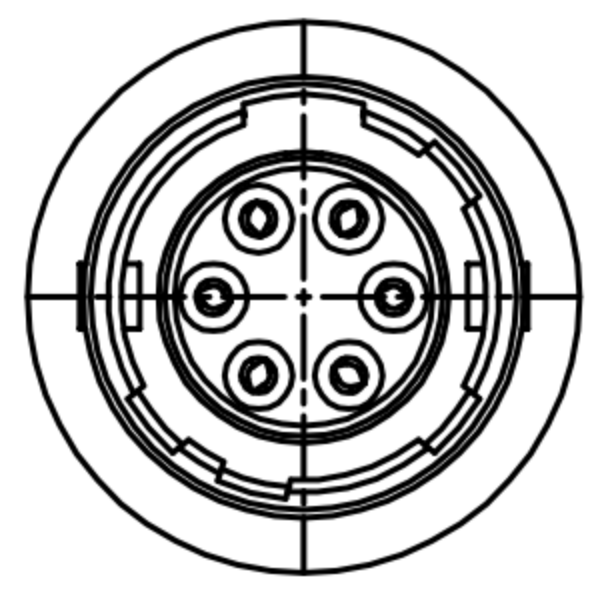
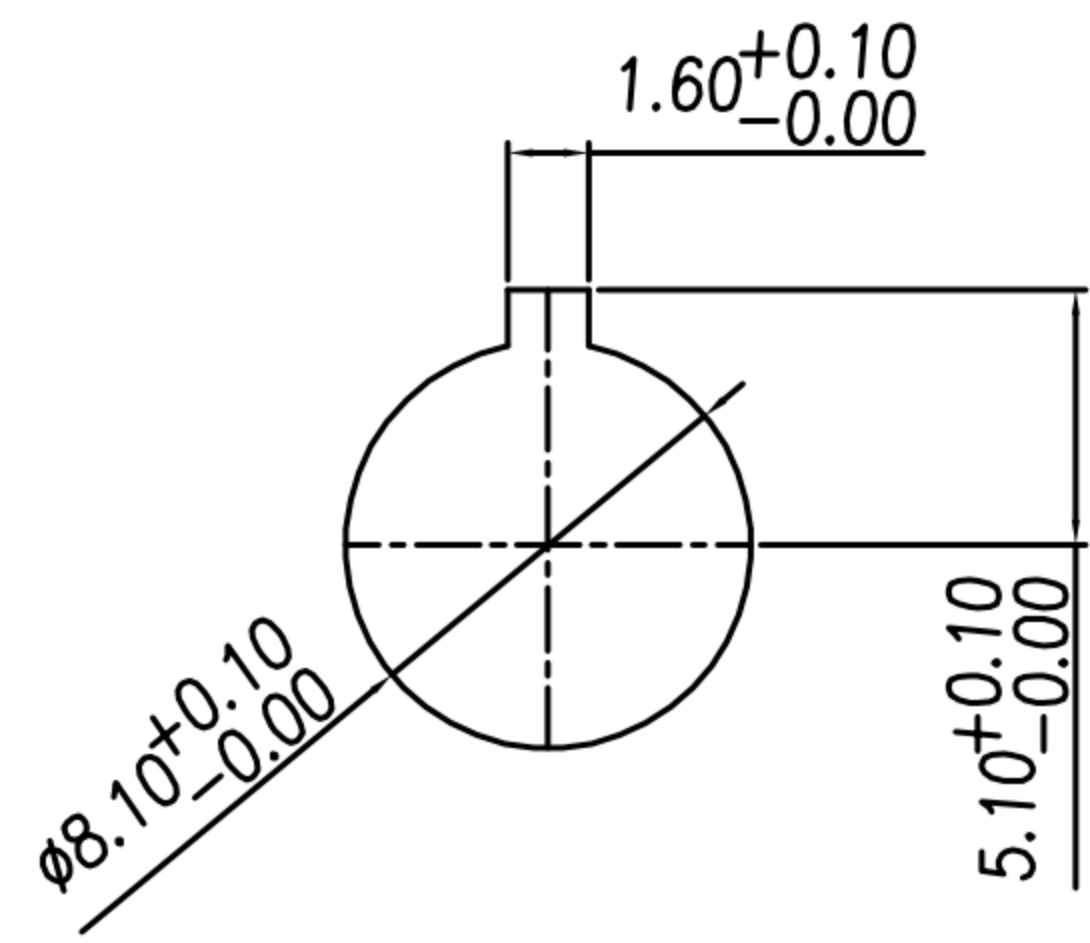
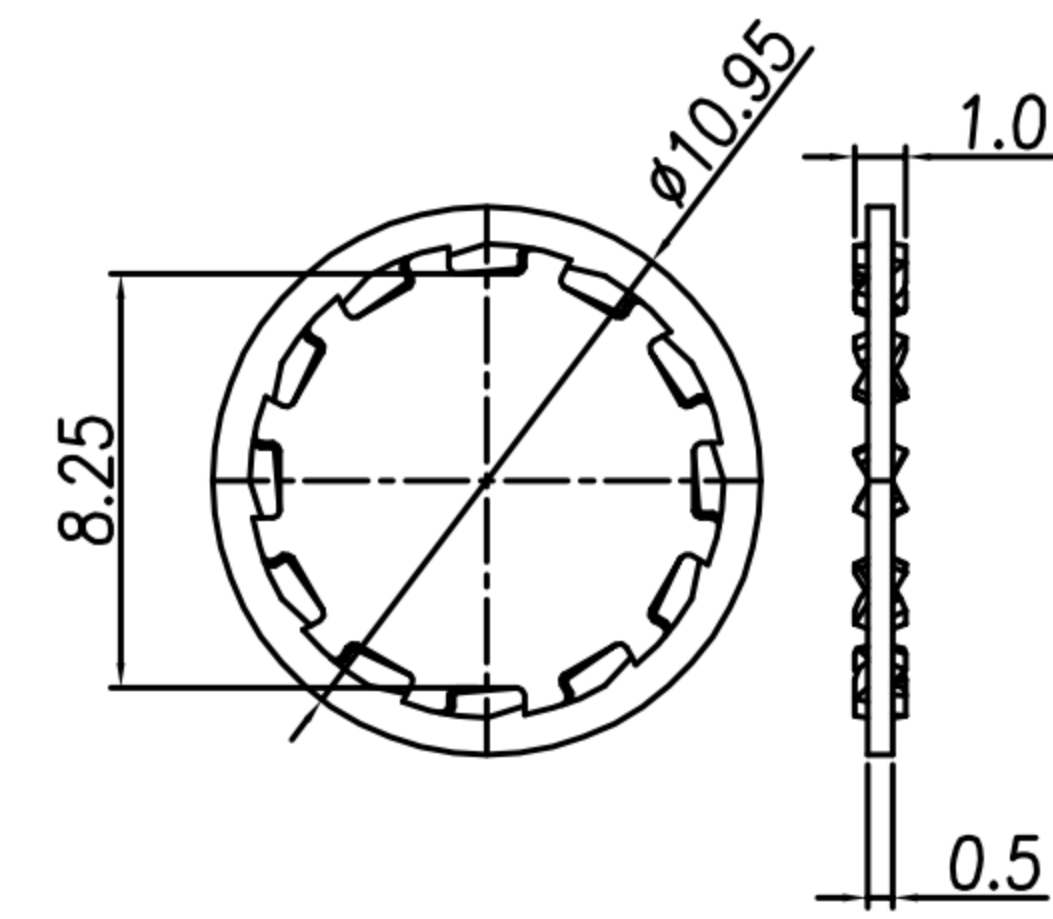


CUSTOMER DRAWING

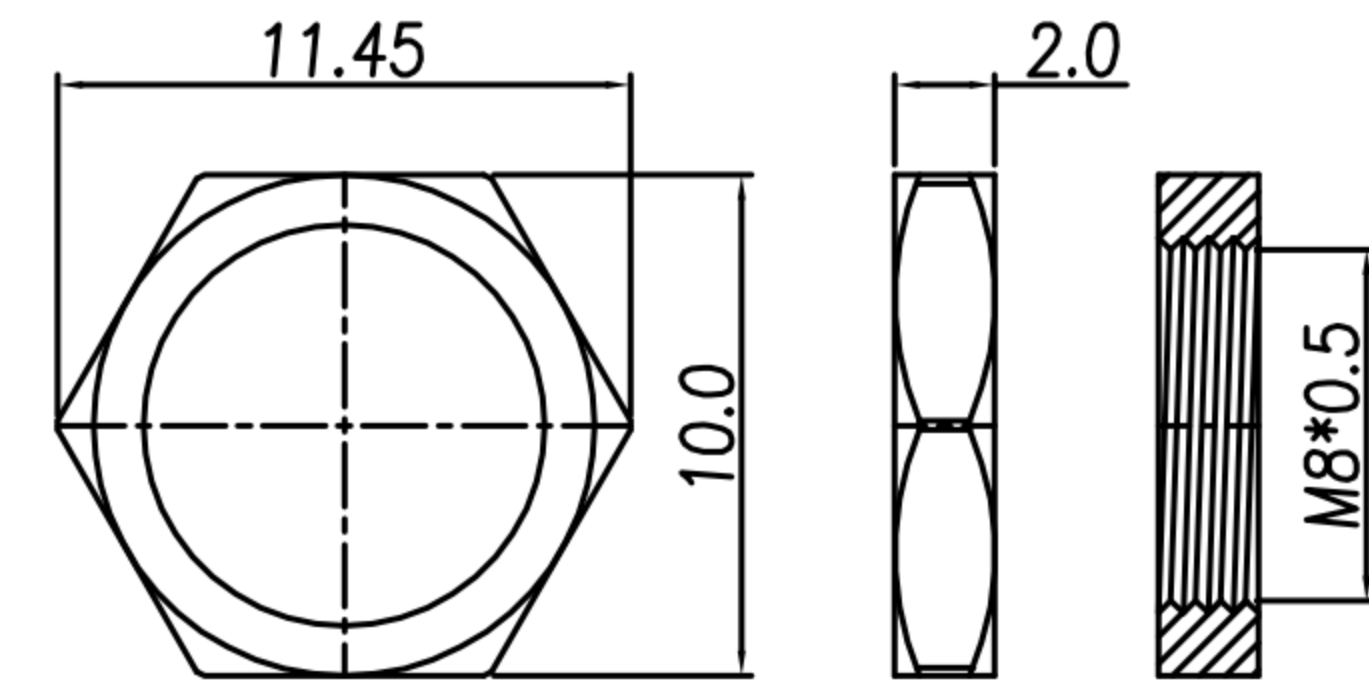
| REV. | DESCRIPTION | APPROVED BY | DATE | ECN NO. |
|------|-----------------|-------------|-----------|---------|
| △A | RELEASE | Emily Suen | 22/11/11' | |
| △B | CHANGE MATERIAL | Emily Suen | 19/09/22' | |
| △C | | | | |
| △D | | | | |



RECOMMENDED MOUNTING HOLE
(Panel thickness 0.7~2)



WASHER



NUT

HOUSING+CONTACT+SPRING+SHELL

NOTE:

- MATERIAL :
 - △A 1-1. HOUSING : NYLON66 UL94V-0; COLOR : BLACK
 - 1-2. CONTACT : PHOSPHOR BRONZE
 - 1-3. SHELL : ZINC ALLOY
 - 1-4. SPRING : STAINLESS STEEL
 - 1-5. WASHER : PHOSPHOR BRONZE
 - 1-6. NUT : BRASS
- FINISH :
 - 2-1. CONTACT : GOLD FLASH
 - 2-2. SHELL : NICKEL
 - 2-3. WASHER : NICKEL
 - 2-4. NUT : NICKEL
- ELECTRICAL SPECIFICATION & MECHANICAL PERFORMANCE
 - 3-1. Rated current : 2A
 - 3-2. Rated voltage : 4PIN 150V AC / 200V DC ;
5~7PIN 100V AC / 140V DC
 - 3-3. Insulation resistance : 1,000MΩ Min.
 - 3-4. Contact resistance : 10mΩ Max.
 - 3-5. Withstanding voltage : 4PIN AC500V for a minute
5.6.7PIN AC300V for a minute
 - 3-6. Solder Wire Spec : 26AWG~28AWG
 - 3-7. Durability : 500 cycles
- Environmental :
 - 4-1. Operation Temperature : -25℃~85℃

TABLE A

| CONTACT ARRANGEMENT(FRONT VIEW) | | | |
|---------------------------------|------------|------------|------------|
| | | | |
| DI-04F2-05 | DI-05F2-02 | DI-06F2-06 | DI-07F2-02 |

| | | | | | | | | | | | | | | |
|-------|------------|-------|---------|-------|-----|--|--|--|----------|---|---------|--------|---------|---|
| DRAWN | Mark Kao | APPVL | Ku Chou | UNIT | mm | TOLERANCE | | 广东科斯达电子科技有限公司 GUANG DONG KE SI DA ELECTRONIC TECHNOLOGY CO., LTD. | TITLE | DIN (F) RECEPTACLE 鑰匙/鑰匙式(SHELL SIZE 7mm) | | | SHEET | 1 |
| CHK'D | Emily Suen | | | SCALE | 1:1 | .x ±0.20 .xx ±0.10 .xxx ±0.05 .xxxx ±0.03 ANGULA ±1° | | | PART NO. | SEE TABLE A | DWG NO. | QC5665 | VERSION | |