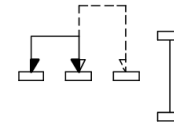
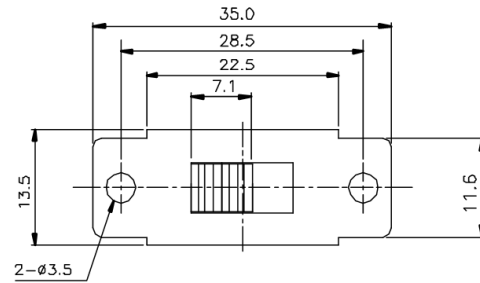
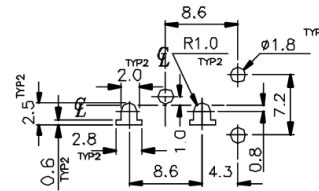
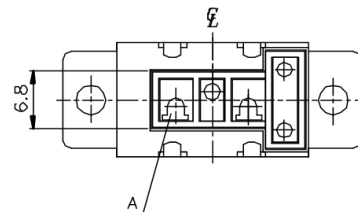
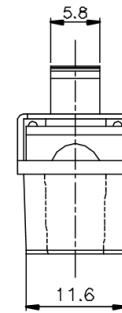
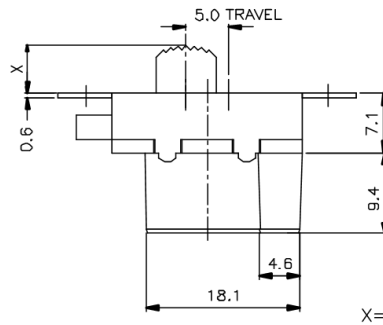


KSD



NON-SHORTING
SCHEMATIC



"A" DETAILED

MARKING:

SIDE A: **KSD**  **US**


SIDE B: U4 AC 125V 4A
AC 250V 2A

NOTES: 1 ALL FIVE SPRING TERMINAL GAPS SHOULD ACCEPT

WITHOUT FORCE A 0.254mm PIN GAUGE AND NOT

ACCEPT A 0.70mm GAUGE PIN.

2 FOR 16 OR 20 AWG. STRIPPED & TINNED STACKPOLE.

ISSUED	SPECIFICATION (INITIAL)	TITLE: SLIDE SWITCH
	RATING: AC 125V 4A AC 250V 2A	MODEL NO: U4SS-12J14-G
	CONTACT RESISTANCE: Not more than 30mΩ	UNIT: m m DWN
	INSULATION RESISTANCE: 500MΩ AT 500V DC	SCALE: 2 : 1 CHK'D
	WITHSTAND VOLTAGE: 1000V AC AT 1MIN	TOLERANCE: ±0.20 APPD.
	OPERATION FORCE: 400 ±250g	
	SWITCHING LIFE: 10000 Cycles(6-10c/m loading)	
BY:	 广东科斯达电子科技有限公司	DRWG NO: 920322-01
DATE:	GUANG DONG KE SI DA ELECTRONIC TECHNOLOGY CO., LTD.	