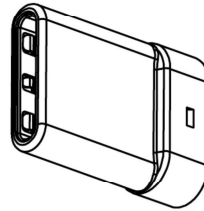


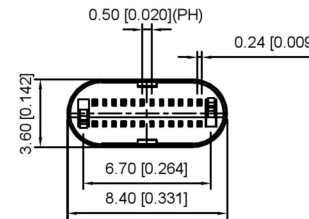
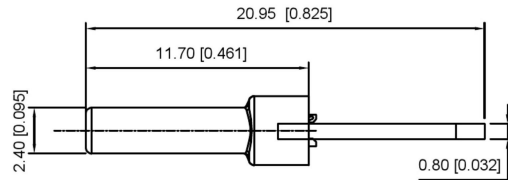
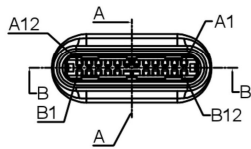
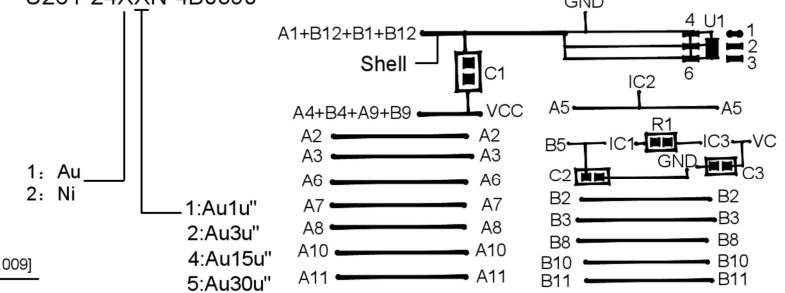
SECT B-B



P/N	R/C
U261-24XXN-4B0389	C1. (10nF X5R 50V) C2. C3. (0.1uF X5R 6.3V) IC, HUSB331DN6(DFN-6L)
U261-24XXN-4B0390	C11(10nF X5R 50V) R1. (0R)

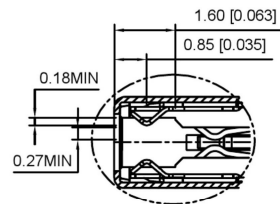
U261-24XXN-4B0390

C TYPE PLUG:

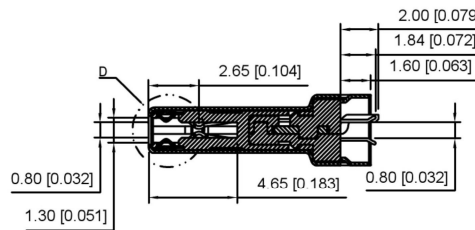


REMARKS:

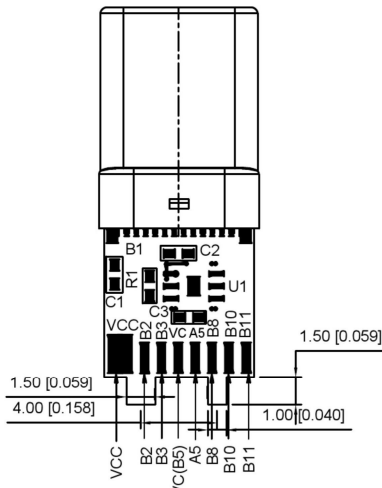
- CONTACT INSERTION AND WITHDRAW FORCE:
 - Insertion force: 5N-20N max.
 - Withdrawal force: 8N-20N.
 - Durability : 10000Cycles.
- ELECTRIC PROPERTY:
 - Contact current rating: 3A.
 - Dielectric Strength: 100V AC(RMS).
 - Insulation Resistance: 100 megaohms min.
 - Contact resistance:
 - 40mOhms MAX. FOR VBUS, GND AND OTHER CONTACT
 - 50mOhms MAX. AFTER ENVIRONMENT TEST
- AMBIENT TEMPERATURE:
 - Operating temperature: -55°C to +85°C.



D
2:1



SECT A-A



A12	A11	A10	A9	A8	A7	A6	A5	A4	A3	A2	A1
GND	RX2+	RX2-	Vbus	SBU1	D-	D+	CC	Vbus	TX1-	TX1+	GND
GND	TX2+	TX2-	Vbus	Vconn			SBU2	Vbus	RX1-	RX1+	GND
B1	B2	B3	B4	B5	B6	B7	B8	B9	B10	B11	B12

ITEM	DESCRIPTION	MATERIAL	REMARKS
6	Shrapnel	SUS T=0.10mm	
5	Shell	SUS T=0.15mm	Ovep-plating: Ni
4	Terminal	C7025 T=0.15mm	Ovep-plating: Au Ni/Sn
3	Latch	SUS T=0.4mm	
2	Housing	LCP	UL94-0
1	Housing Stopper	LCP	UL94-0

REVISIONS				DATE	REVISED	APPROVED	UNSPECIFIED TOLERANCES	DSND	SCALE: N/A	MODEL TYPE: Type-C 3.1	
							ANGULAR				
							L ≤ 4	±5°			
							4 < L ≤ 16	±0.2			
							16 < L ≤ 63	±0.3			
							L > 63	±0.4			
								±0.5			
								VIEW:		PART NO.:	
								UNIT: mm/in		DWG NO.:	
								SIZE: A4		U261-24XXN-4B0390	
									WEIGHT	SHEET	REVISION
										1/1	A0

KSD
SWITCH CONNECTOR

KE SI DA ELECTRONIC TECHNOLOGY CO., LTD