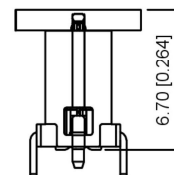
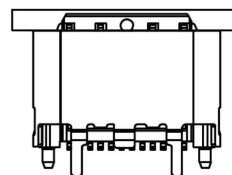
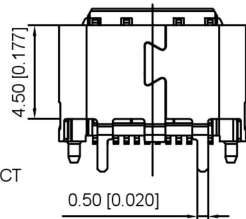
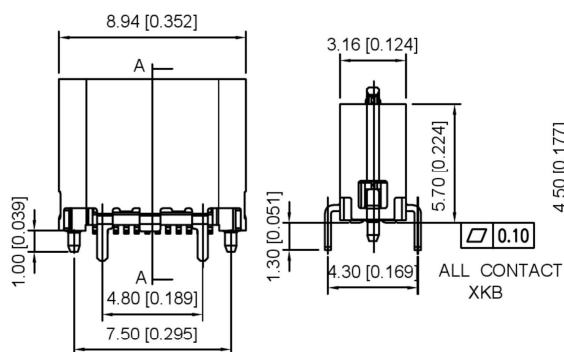
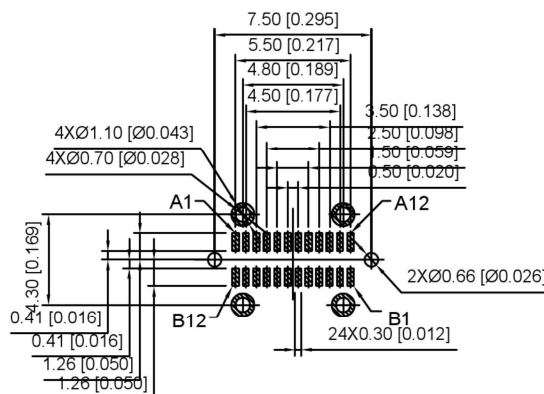
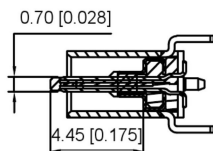
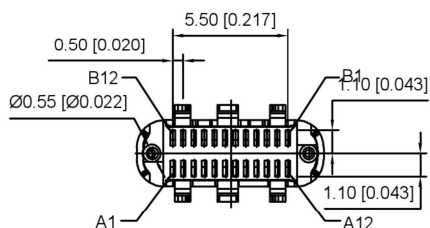


WITH PICK UP COVER



NOTE:
 1. MATERIAL SPECIFICATION:
 1. HOUSING: LCP, UL94 V-0
 2. TERMINAL: COPPER ALLOY
 3. MID PLATE: STAINLESS STEEL
 4. FRONT SHELL: STAINLESS STEEL
 5. EMI PLATE: STAINLESS STEEL
 2. PLATING SPECIFICATION:
 2-1. TERMINAL:
 Ni 50u" MIN. UNDER PLATED OVER ALL.
 Au PLATED ON THE FUNCTIONAL AREA OF CONTACT.
 (GOLD PLATING THICKNESS FOLLOW THE P/N)
 PLATING SPECIFICATIONS OF THE SOLDER AREA FOLLOW THE P/N
 2-2. FRONT SHELL:
 PLATING SPECIFICATIONS FOLLOW THE P/N
 2-3. MID PLATE&EMI PLATE:
 CLEAR ONLY
 3. MECHANICAL PERFORMANCE:
 3-1. INSERTION FORCE: 0.5~2.0kgf.
 3-2. REMOVAL FORCE: 0.8kgf~2.0kgf.
 3-3. DURABILITY: 10000 CYCLES.
 4. ELECTRICAL PERFORMANCE:
 4-1. VOLTAGE RATING: 5 V DC/AC (RMS. max)
 CURRENT RATING: 5 AMPS. FOR TOTAL VBUS/GND PINS;
 1.25AMPS FOR CC PIN, 0.25 AMPS. FOR ALL OTHER CONTACT.
 4-2. LLCR:
 VBUS & GND PINS AND OTHER PINS: 40mΩ/PIN MAX.
 SHIELD: 50mΩ/MAX
 LLCR MAX. CHANGE OF ALL PINS: 10mΩ.
 4-3. INSULATION RESISTANCE: 100MΩ MIN
 4-4. DIELECTRIC WITHSTAND VOLTAGE: AC 100V FOR 1 MINUTE.
 5. ENVIRONMENTAL PERFORMANCE:
 OPERATING TEMPERATURE: -25°C~+85°C.
 6. IR REFLOW:
 THE PEAK TEMPERATURE ON THE BOARD SHALL
 BE MAINTAINED FOR 10 SECONDS AT 260°C.



RECOMMENDED PCB LAYOUT (TOP VIEW)
 DEFAULT TOLERANCE: ±0.05

U263-24XN-4BQC03

W: WHITE
 B: BLACK

1: Au 1U"
 2: Au 3U"
 3: Au 15U"
 4: Au 30U"
 1: PBT
 2: PA6T
 3: PA9T
 4: LCP

				ANGLAR	±5°	 KSD SWITCH CONNECTOR	DSND	SCALE: N/A	MODEL TYPE:	Type-C 3.1	
				L ≤ 4	±0.2		DWN	VIEW:	PART NO.:		
				4 < L ≤ 16	±0.3		CHKD	UNIT: mm/in	DWG NO.:		
				16 < L ≤ 63	±0.4		APPD	SIZE: A4		U263-24XN-4BQC03	
				L > 63	±0.5						
REVISIONS				UNSPECIFIED TOLERANCES		KE SI DA ELECTRONIC TECHNOLOGY CO., LTD			WEIGHT	SHEET	REVISION
WWW.BODONGKAIGUAN.NET				WWW.CKJACK.COM						1/1	A0