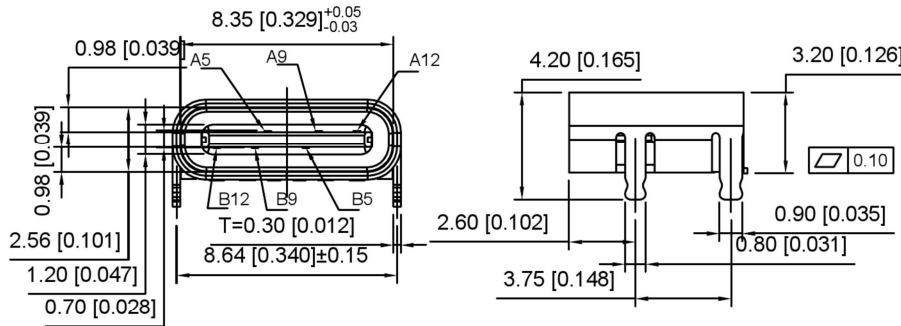
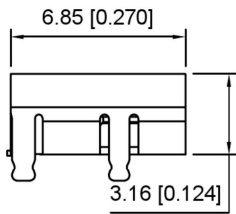


RECOMMENDED P.C.B LAYOUT  
TOLERANCE UNSPECIFIED ±0.05mm

# U262-06XN-4BVC11

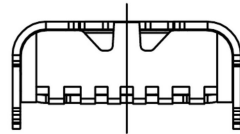
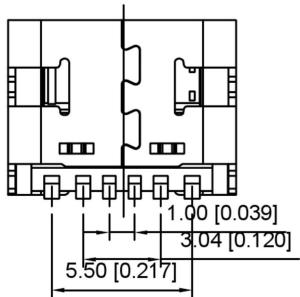
- 1: 0.8u"
- 2: 5u"
- 3: 10u"



### NOTES:

1. MATERIAL:
  - MOLDING: LCP UL94V-0
  - CONTACT: COPPER ALLOY.
2. Finished: contact area: plating Au 0.8u", solder tail: plating Au 0.8u", all plating Ni 40u"
  - SHELL: SUS201-1/2HT=0.30+0.03mm
  - 50U' NICKEL PLATING OVER ALL.
2. MECHANICAL:
  - INSERTION: 5~20N.
  - EXTRACTION: 8~20N AFTER TEST.
  - DURABILITY: 8000 CYCLES
3. ELECTRICAL:
  - CURRENT: 5A FOR VBUS:
    - 1.25A FOR GND PIN
    - 0.25A FOR OTHER
  - VOLTAGE: 20 V MAX
  - WITHSTANDING VOLTAGE: 100V AC R.M.S.
  - CONTACT RESISTANCE: 40mΩ MAX.
  - INSULATION RESISTANCE: 100MΩ MIN.
4. ENVIRONMENTAL
  - TEMPERATURE RANGE -25°C~+85°C

B12	GND
B9	VBUS
B5	CC2
A5	CC1
A9	VBUS
A12	GND
PIN	SIGNAL NAME



DSND		SCALE: N/A	MODEL TYPE: Type-C 3.1
DWN		VIEW:	PART NO.:
CHKD		UNIT: mm/in	DWG NO.:
APPD		SIZE: A4	U262-06XN-4BVC11
		WEIGHT	SHEET
			REVISION
		1/1	A0

ANGULAR	±5°	 SWITCH CONNECTOR	KE SI DA ELECTRONIC TECHNOLOGY CO., LTD		
L ≤ 4	±0.2		WWW.BODONGKAIGUAN.NET	WWW.CKJACK.COM	WWW.KSDKG.COM
4 < L ≤ 16	±0.3				
16 < L ≤ 63	±0.4				
L > 63	±0.5				
UNSPECIFIED TOLERANCES					
REVISIONS					
DATE	REVISED	APPROVED			