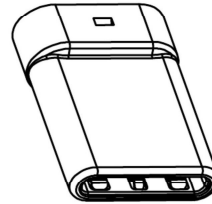


SECT B-B

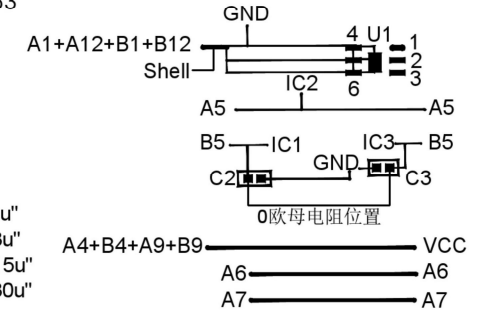


U261-24XXN-4B0363

- 1: Au
- 2: Ni
- 1: Au1u"
- 2: Au3u"
- 4: Au15u"
- 5: Au30u"

C TYPE PLUG:

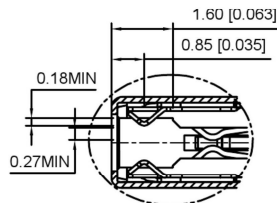
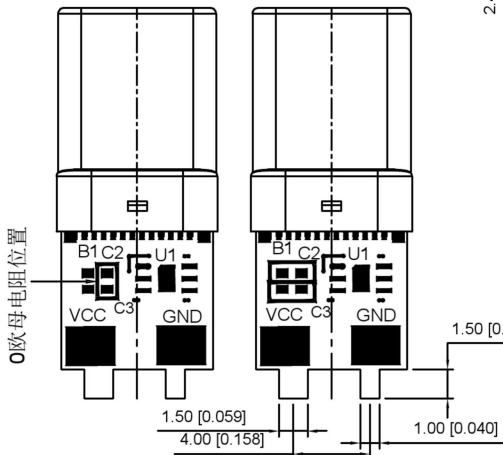
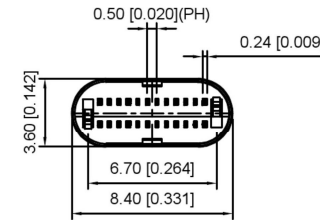
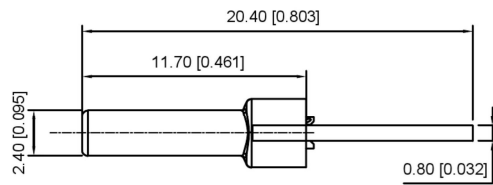
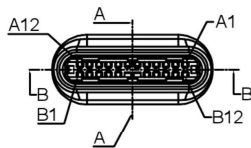
PCB



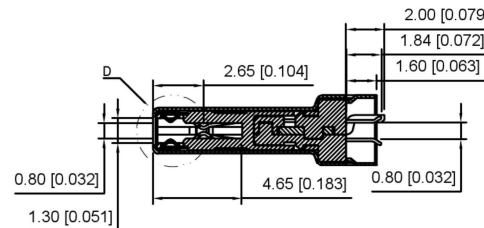
P/N	R/C
U261-24XXN-4B0355	C2, C3(0.1uF X5R 6.3V) IC,HUSB330DN6(DFN-6L)
U261-24XXN-4B0363	在C2与C3靠近IC的位置竖着贴一个(0欧姆电阻)

REMARKS:

- 1.CONTACT INSERTION AND WITHDRAW FORCE :
 - 1.Insertion force : 5N-20N max.
 2. Withdrawal force : 8N-20N.
 - 3.Durability : 10000Cycles.
- 2.ELECTRIC PROPERTY :
 1. Contact current rating : 3A.
 - 2.Dielectric Strength : 100V AC(RMS).
 - 3.Insulation Resistance : 100 megaohms min.
 4. Contact resistance :
 - 40mOhms MAX.FOR VBUS,GND AND OTHER CONTACT
 - 50mOhms MAX.AFTER ENVIRONMENT TEST
- 3.AMBIENT TEMPERATURE :
 1. Operating temperature : -55°C to +85°C.



D
2:1



SECT A-A

A12	A11	A10	A9	A8	A7	A6	A5	A4	A3	A2	A1
GND	RX2+	RX2-	Vbus	SBU1	D-	D+	CC	Vbus	TX1-	TX1+	GND
GND	TX2+	TX2-	Vbus	Vconn			SBU2	Vbus	RX1-	RX1+	GND
B1	B2	B3	B4	B5	B6	B7	B8	B9	B10	B11	B12

ITEM	DESCRIPTION	MATERIAL	REMARKS
6	Shrapnel	SUS T=0.10mm	
5	Shell	SUS T=0.15mm	Ovep-plating: Ni
4	Terminal	C7025 T=0.15mm	Ovep-plating: Au Ni/Sn
3	Latch	SUS T=0.4mm	
2	Housing	LCP	UL94-0
1	Housing Stopper	LCP	UL94-0

REVISIONS				ANGULAR	±5°	 SWITCH CONNECTOR	DSND	SCALE: N/A	MODEL TYPE:	
DATE	REVISED	APPROVED	L ≤ 4	±0.2	DWN		VIEW:	PART NO.:		
			4 < L ≤ 16	±0.3	CHKD		UNIT: mm/in	DWG NO.:		
			16 < L ≤ 63	±0.4	APPD		SIZE: A4	U261-24XXN-4B0363		
				L > 63	±0.5	KE SI DA ELECTRONIC TECHNOLOGY CO., LTD		WEIGHT	SHEET	REVISION
WWW.BODONGKAIGUAN.NET				UNSPECIFIED TOLERANCES				1/1	A0	