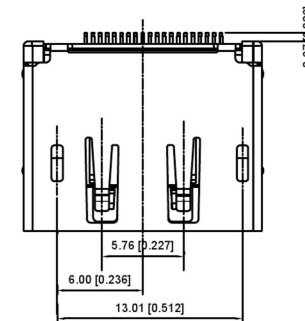
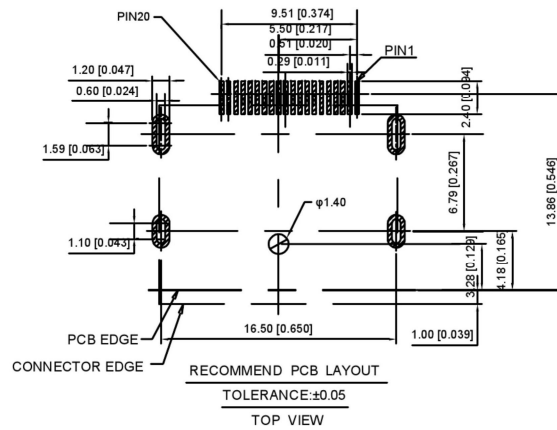
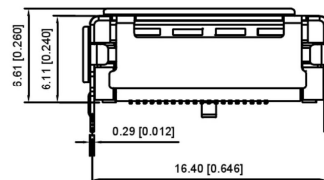
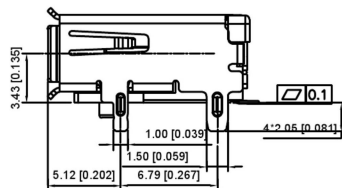
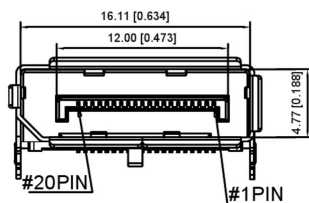


S:Scrolls

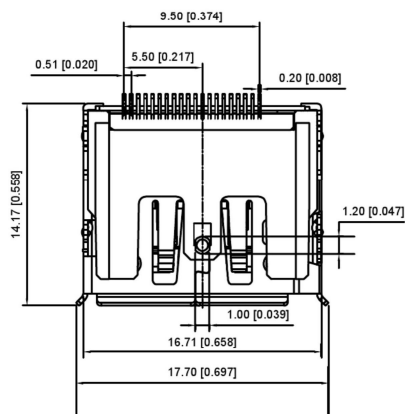


F: Flat



CAR06 - 201EN X X  
① ②

- ① PACKAGE  
2=TAPE REEL  
5=TAPE REEL+MYLAR
- ② Interface type  
S:Scrolls  
F:Flat



**MATERIALS**

1. HOUSING: LCP (UL94V-0), BLACK.
2. TERMINAL: COPPER ALLOY,  
GOLD PLATED ON CONTACT AREA,  
TIN PLATED ON SOLDER TAILS.  
NICKEL PLATED OVERALL.
3. SHELL: STAINLESS STEEL,  
NICKEL PLATED OVERALL.

**SPECIFICATION**

1. CURRENT RATING: 0.5A. MAX.
2. DIELECTRIC WITHSTANDING VOLTAGE:  
500V AC R.M.S. FOR ONE MINUTE.
3. INSULATION RESISTANCE: 100MΩ MIN. AT 500V DC.
4. CONTACT RESISTANCE: 30mΩ MAX.
5. OPERATING TEMPERATURE: -25°C TO +85°C.
6. DURABILITY: 10000 CYCLES.
7. MATING FORCE: 4.5kgf MAX.
8. UNMATING FORCE: 1.0kgf MIN.

				ANGULAR	±5°	<b>KSD</b> SWITCH CONNECTOR	DSND	SCALE: N/A	MODEL TYPE: DP CONNECTOR
				L ≤ 4	±0.2		DWN	VIEW:	PART NO.:
				4 < L ≤ 16	±0.3		CHKD	UNIT: mm/in	DWG NO.:
				16 < L ≤ 63	±0.4		APPD	SIZE: A4	CAR06-201ENXX
				L > 63	±0.5				
REVISIONS				DATE	REVISED	APPROVED	UNSPECIFIED TOLERANCES		
WWW.BODONGKAIGUAN.NET				WWW.CKJACK.COM		WWW.KSDKG.COM		KE SI DA ELECTRONIC TECHNOLOGY CO., LTD	
							WEIGHT	SHEET	REVISION
								1/1	A0