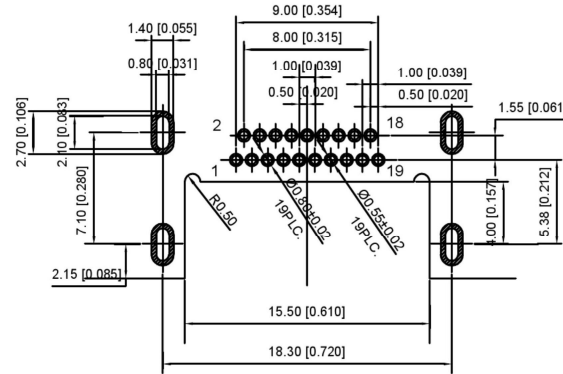
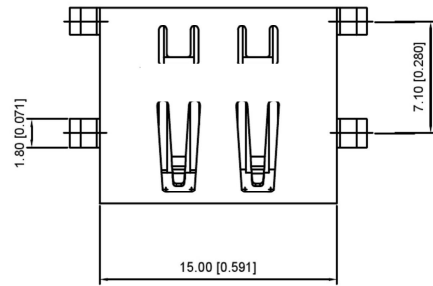
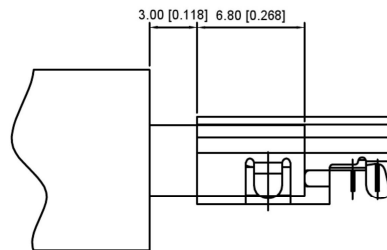
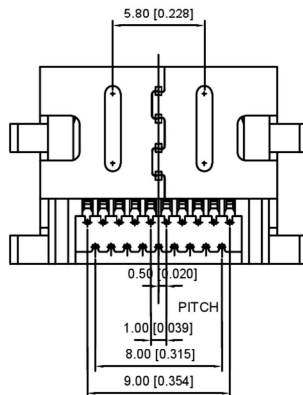
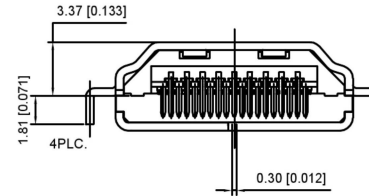
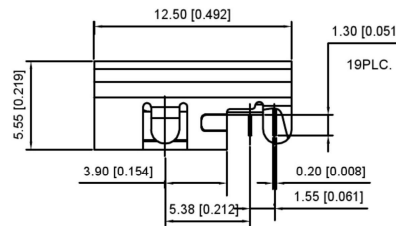
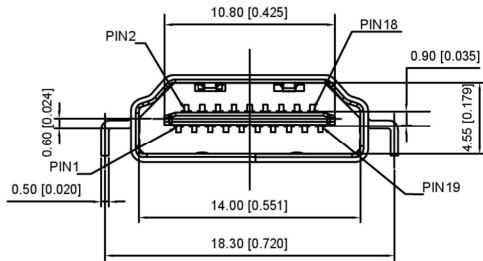


# A71-05H8-1X1N1





1:AU 1U"  
5:AU 15U"  
6:AU 30U"

RECOMMENDED P.C.B LAYOUT (THICKNESS=1.2mm)  
(COMPONENT SIDE) TOLERANCES ±0.05mm



NOTE:  
1. MATERIAL:  
HOUSING: THERMOPLASTIC HIGH TEMP WITH 30%GF, UL94V-0.  
CONTACT: BRASS T=0.20mm  
SHELL: BRASS T=0.50mm  
MYLAR: KAPTON TAPE  
2. FINISH:  
CONTACT: GOLD PLATING ON CONTACT AREA,  
MATTE TIN PLATING ON SOLDER TAILS  
100u" MIN. NICKEL UNDERPLATING OVERALL.  
SHELL: 40u" MIN. NICKEL PLATING OVERALL.

				ANGULAR	±5°	 SWITCH CONNECTOR	SCALE: N/A	MODEL TYPE: HDMI CONNECTOR	
				L ≤ 4	±0.2		VIEW: 	PART NO.:	
				4 < L ≤ 16	±0.3		UNIT: mm/in	DWG NO.:	
				16 < L ≤ 63	±0.4		SIZE: A4	A71-05H8-1X1N1	
				L > 63	±0.5			WEIGHT	SHEET
REVISIONS				UNSPECIFIED TOLERANCES	KE SI DA ELECTRONIC TECHNOLOGY CO., LTD			1/1	A0
WWW.BODONGKAIGUAN.NET    WWW.CKJACK.COM    WWW.KSDKG.COM									