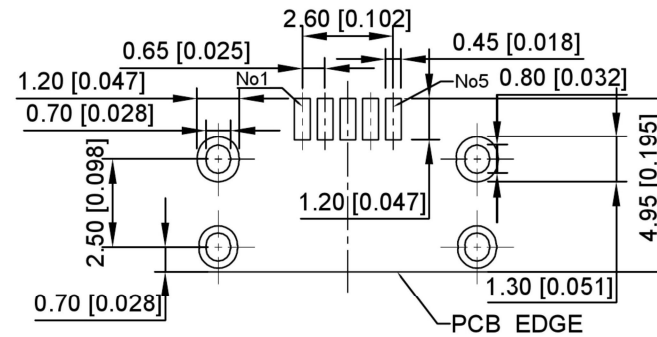
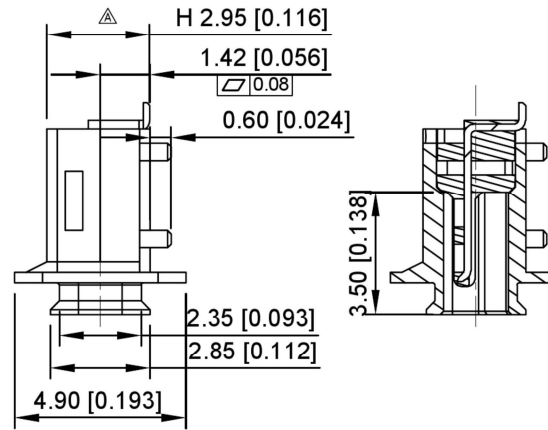
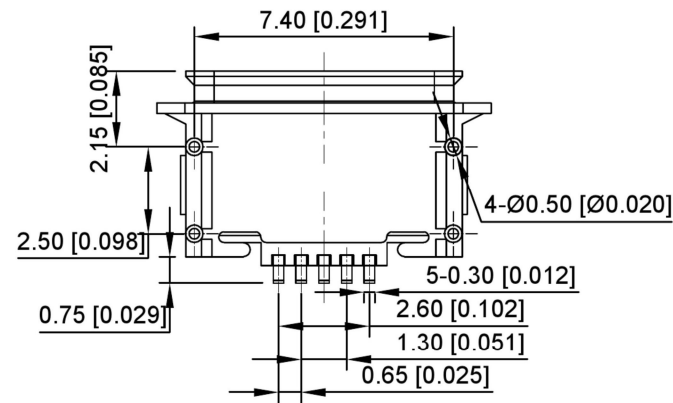
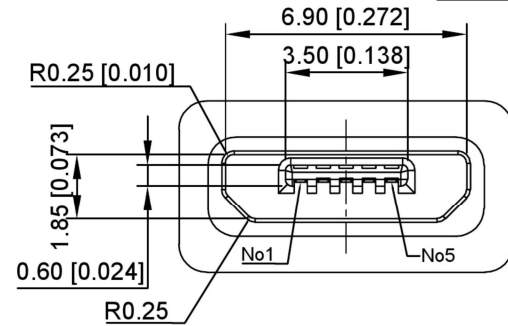
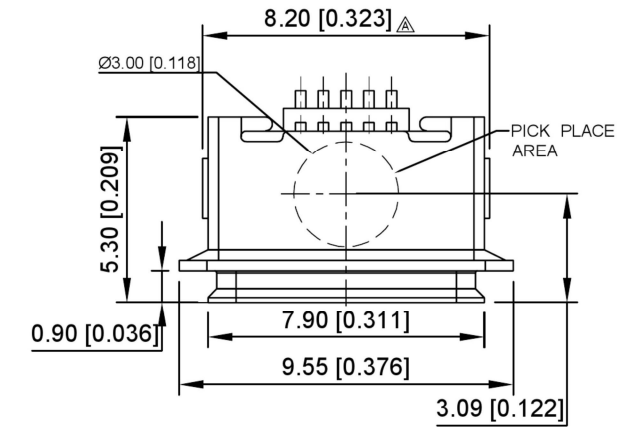


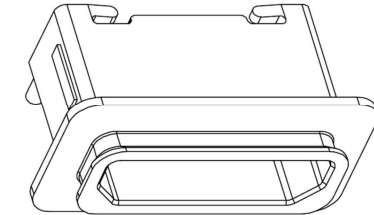
IP-X8



RECOMMENDED PCB LAYOUT
TOLERANCE: ±0.03mm
RECOMMEND PCB THICKNESS: 0.60mm

U-E-M8SS-Y-1

1:G/F 4:15u" 5:30u"



NOTES:

1. MATERIAL:

HOUSING: THERMOPLASTIC HIGH-TEMP UL94V-O BLACK COLOR
CONTACT: COPPER ALLOY
SHELL: STAINLESS STEEL

2. FINISH:

2.1. TERMINAL CONTACT (SEE TAB) The minimum nickel plating base of the terminal is 50u", the contact part is plated with Gold-plated 30u", and the solder foot area is plated with Tin plating 75u"~150u".
2.2. OUT SHELL: 50u" Min. NICKEL ALL OVER


3. APPLIED TO IR SOLDERING PROCESS

4. SPECIFICATION:

4.1. ELECTRICAL CHARACTERISTICS
CONTACT CURRENT RATING: Signal PIN 1A, Power PIN 1.8A.
VOLTAGE RATING: 30V AC rms.
CONTACT RESISTANCE: 30mΩ MAX.
DIELECTRIC WITHSTANDING VOLTAGE:
UNMATEP CONTACT 100V AC rms. 60MHZ FOR 1 MINUTE
INSULATION RESISTANCE: 1000MΩ MIN. 100V DC
TEMPERATURE RANGE: -30 °C TO +85 °C

4.2. MECHANICAL:

INSERTION FORCE: 35N MAX.
WITHDRAWAL FORCE: 5N MIN 25N MAX.

						<div>KSDB</div> <div>SWITCH CONNECTOR</div>	DSND		SCALE: N/A	MODEL TYPE: MICRO USB						
				ANGLAR	±5°		DWN		VIEW: 	PART NO.:						
				L≤ 4	±0.2		CHKD		UNIT: mm/in	DWG NO.:						
				4<L≤ 16	±0.3		APPD		SIZE: A4	U-E-M8SS-Y-1						
				16<L≤ 63	±0.4											
DESCRIPTION				DATE	REVISED	APPROVED	L> 63	±0.5								
REVISIONS						UNSPECIFIED TOLERANCES			KE SI DA ELECTRONIC TECHNOLOGY CO., LTD					WEIGHT	SHEET	REVISION
WWW.BODONGKAIGUAN.NET WWW.CKJACK.COM WWW.KSDKG.COM															1/1	A0