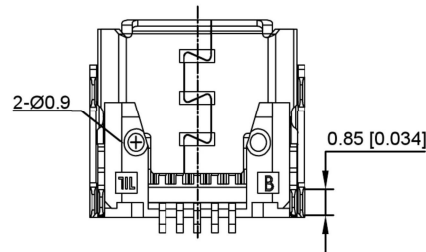
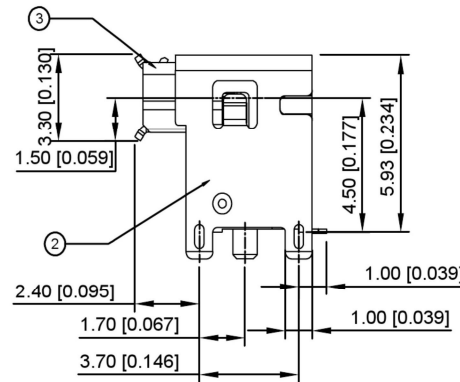
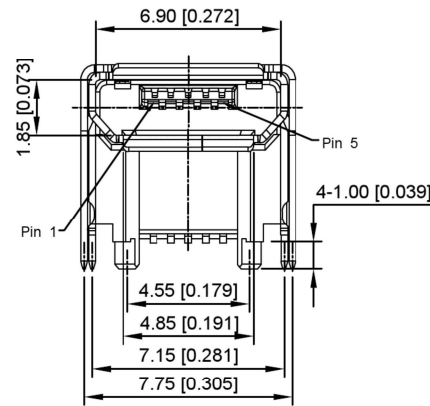
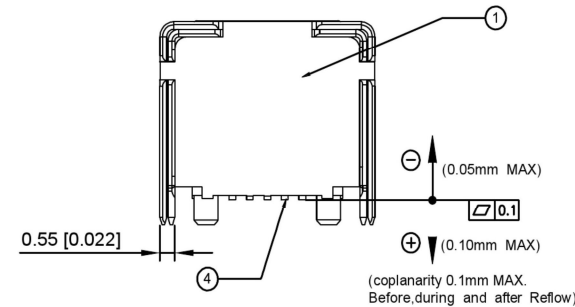


RECOMMENDED PCB LAYOUT

Tolerance: ±0.1(TOP VIEW)



Material
Housing Material: LCP, UL94V-0, black
Contact Terminal: Copper Alloy
Metallic Shell: Sus
Electrical
Voltage Rating: 30 V AC
Current Rating: Signal(Pins 2,3,4):1.0A, Power (Pins 1,5): 1.8A
Contact Resistance: 30mΩ Max
Insulation resistance: 1000MΩ Min
Dielectric withstanding voltage: 250V AC/Minute
Mechanical
Durability: 10,000 cycles
Mating Force: 35N(3.57Kgf) Max
Unmating Force: 8N(0.82Kgf) Min.



				ANGULAR	±5°	DSND		SCALE: N/A	MODEL TYPE: MICRO USB
				L ≤ 4	±0.2	DWN		VIEW:	PART NO.:
				4 < L ≤ 16	±0.3	CHKD		UNIT: mm/in	DWG NO.:
				16 < L ≤ 63	±0.4	APPD		SIZE: A4	U-D-M7DS-G-3
				L > 63	±0.5				WEIGHT
DESCRIPTION	DATE	REVISED	APPROVED	UNSPECIFIED TOLERANCES		KE SI DA ELECTRONIC TECHNOLOGY CO., LTD			SHEET
REVISIONS									1/1
WWW.BODONGKAIGUAN.NET WWW.CKJACK.COM WWW.KSDKG.COM									REVISION
									A0

