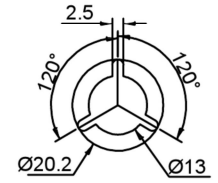
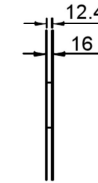
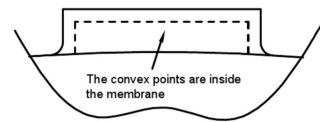
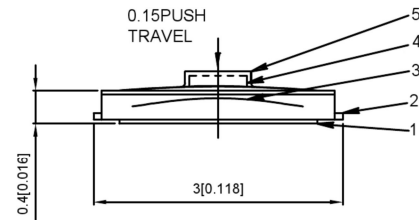


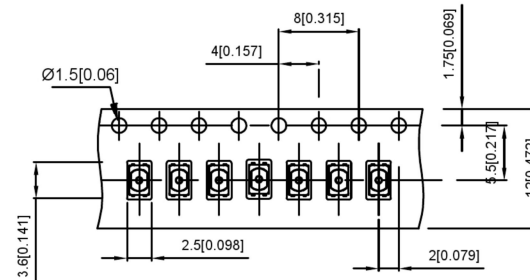
SC 1:150



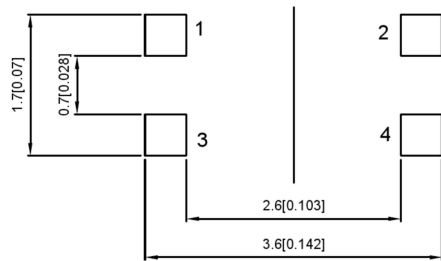
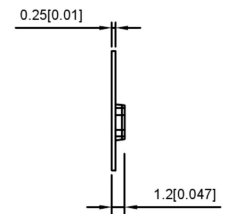
DETAL:A
SC
10:1



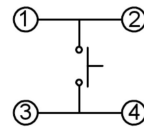
TEASCALE:2.5/1



SC 1:10



Recommended PAD Layout
Recommended solder thickness: T=0.10±0.01



CIRCUIT DIAGRAM

PAPT NO	TS-1928-X
Operating Force	B:160gf C:260gf

- 1.RATING:DC 12V,50mA MAX
- 2.TRAVEL:0.15±0.1mm
- 3.LIFE:300,000cycles
- 4.PACKAGE:10000Pcs/Reel

5	COVER	1	PA	WHITE
4	KNOB	1	PI	BLACK
3	CONTACT	2	SUS	Ag-Plate
2	TERMINAL	2	PHOSPHOR BRONZE	Ag-Plate
1	CASE	1	PPA	BLACK
ITEM	PART NAME	QTY	MATERIAL	FINISH

				ANGLAR	±5°		DSND		SCALE: N/A	MODEL TYPE: TACT SWITCH
				L ≤ 4	±0.2		DWN		VIEW:	PART NO.: TS-1928-X
				4 < L ≤ 16	±0.3		CHKD		UNIT: mm/in	DWG NO.:
				16 < L ≤ 63	±0.4		APPD		SIZE: A4	
				L > 63	±0.5					
DATE	REVISED	APPROVED		UNSPECIFIED TOLERANCES				KE SI DA ELECTRONIC TECHNOLOGY CO., LTD		
							WEIGHT	SHEET	REVISI	
								1/1	A0	