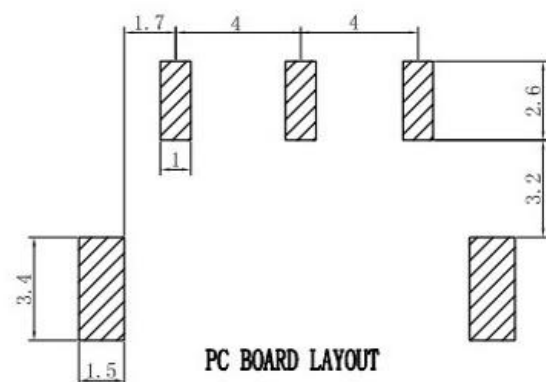
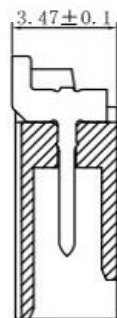
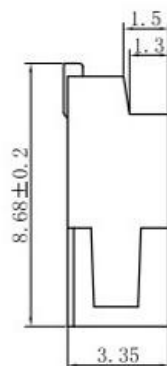
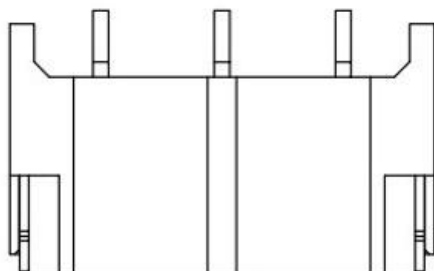
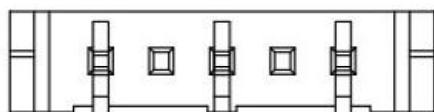


Electrical

Voltage: 1400 V AC(rms)/DC  
 Current: 1 A AC(rms)/DC  
 Contact Resistance: 10 mΩ max  
 Dielectric Withstanding Voltage: 3800 V AC/rms  
 Insulation Resistance: 1000 MΩ min  
 Operating Temp: -25° C ~ +85° C



# 科斯达电子科技有限公司

檢驗尺寸標示 SYMBOLS ① ② INDICATE CLASSIFICATION DIMENSION	工程圖號	制圖 (DR) '08/5/16
① MARK IS CRITICAL DIM. ② MARK IS MAJOR DIM.	品名 BHS4.0mm-3P (高压插座5缺3)	審核 (CHKD)
表面處理 (FINISH)	TITLE BHS4.0mm Pitch GY FOR SMT CONN	核准 (APPD) Rigo Lu
比例 (SCALE) 1:1	單位 (UNITS) mm	張數 (SHEET) 1 OF 1
		SIZE A4
		REV 0

△			
REV	修改摘要 REVISION DESCRIPTION	日期 DATE	簽名 SIGNATURE