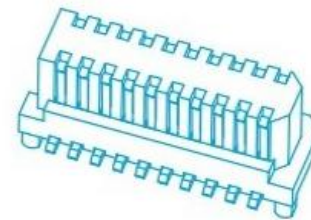
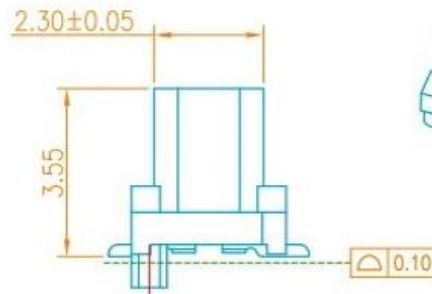
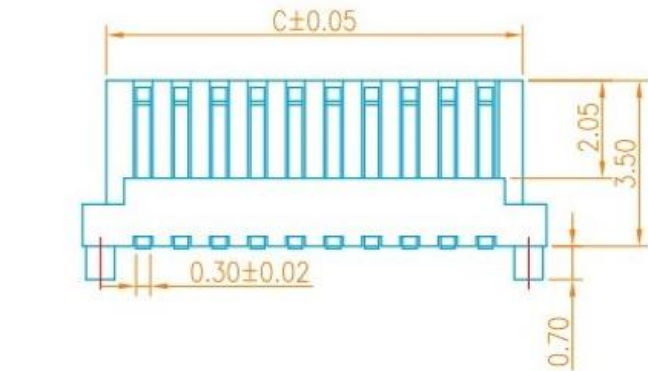
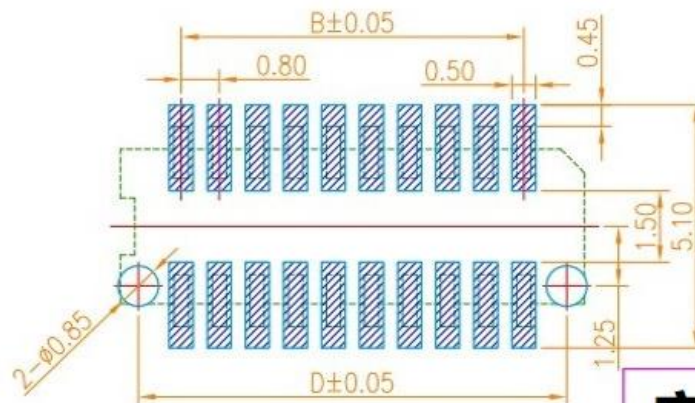
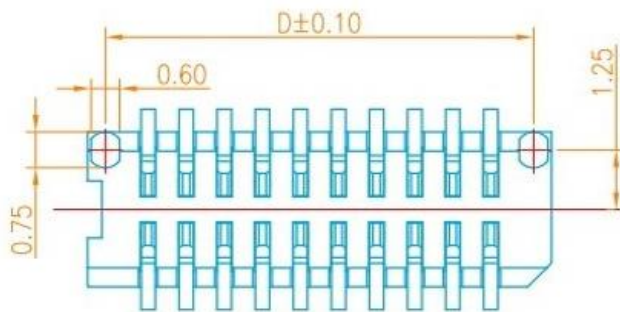


MATING HEIGHT
SCALE:1.25:1



3D VIEW



RECOMMENDED PCB PATTERN DIM.
TOLERANCE : ±0.05

NOTES:

- HUOSING: PA9T HIGH-TEMP THERMOPLASTIC UL94V-0 COLOR:CREAM-COLOURED
- TERMINAL:PHOSPHOR BRONZE
PLATING:1*''GOLD FLASH OVERALL 50~100*''NICKEL UNDER PLATED.

Ordering information

BTB								
1. Male	Pitch:	No. of PIN:	Combined High:	Welding:	Contact	Plastic	Packing:	
2. Female	1.05:0.5mm 2.00:0.8mm	(P-100P) 40-60P 15-15P	18:1.6mm 20:2.0mm 25:2.5mm 30:3.0mm 35:3.5mm 40:4.0mm 45:4.5mm 50:5.0mm 60:6.0mm	S:180° E:90° W:90° SMT	60:gold flash E:30° G:60° G:100°	1:PP 2:PA6 3:PA6T 4:PC	1:Bag 2:Tube 3:Box 4:Reel	

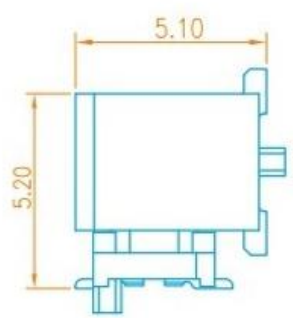
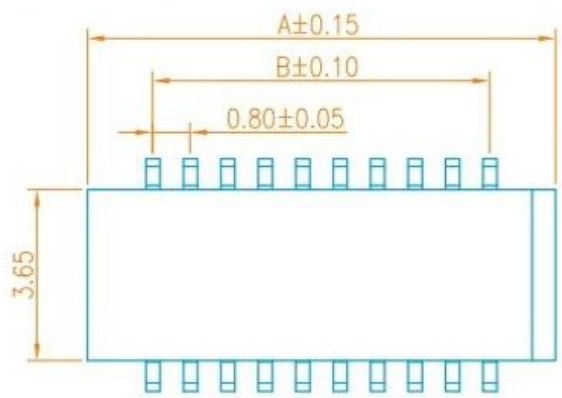
NO. of contacts	Dimensions			
	A	B	C	D
4	3.35	0.80	2.35	2.60
6	4.15	1.60	3.15	3.40
8	4.95	2.40	3.95	4.20
10	5.75	3.20	4.75	5.00
12	6.55	4.00	5.55	5.80
14	7.35	4.80	6.35	6.60
16	8.15	5.60	7.15	7.40
18	8.95	6.40	7.95	8.20
20	9.75	7.20	8.75	9.00
22	10.55	8.00	9.55	9.80
24	11.35	8.80	10.35	10.60
26	12.15	9.60	11.15	11.40
28	12.95	10.40	11.95	12.20
30	13.75	11.20	12.75	13.00
32	14.55	12.00	13.55	13.80
34	15.35	12.80	14.35	14.60
36	16.15	13.60	15.15	15.40
38	16.95	14.40	15.95	16.20
40	17.75	15.20	16.75	17.00
42	18.55	16.00	17.55	17.80
44	19.35	16.80	18.35	18.60
46	20.15	17.60	19.15	19.40
48	20.95	18.40	19.95	20.20
50	21.75	19.20	20.75	21.00
52	22.55	20.00	21.55	21.80

广东科斯达科技有限公司

一般公差 GENERAL TOLERANCE	制图 (DRA): Kevin 2025.07.08	品名(TITLE): BTB 0.8 2*NP SMT 侧插公座
审核 (DRK):	料号(PART NO):	比例(SCALE): 1:8
版本 (REV): A	核准 (APPD):	单位(UNITS): mm
		张数(SHEET): 1 OF 1
		图幅(SIZE): A1

修订 SER	修改摘要 REVISION DESCRIPTION	签名 SIGNATURE	日期 DATE





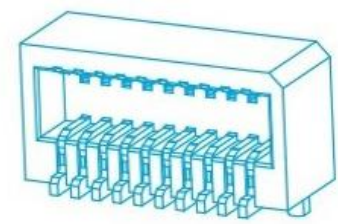
MATING HEIGHT
SCALE: 1.25:1

NOTES:

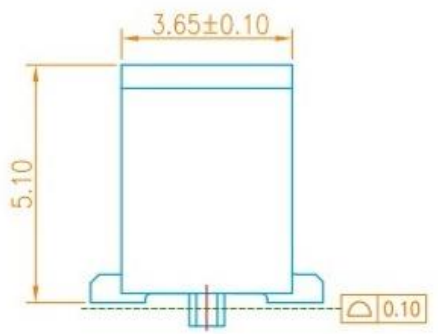
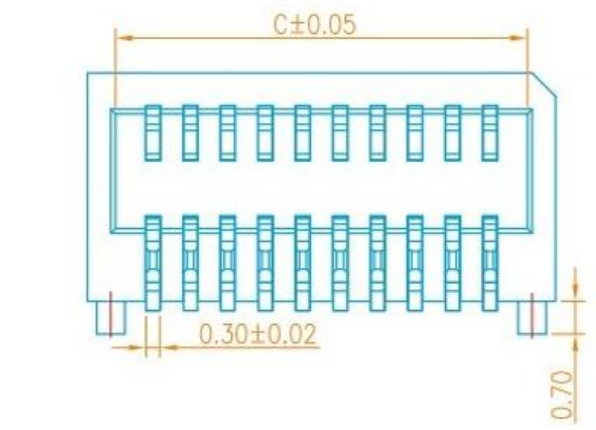
- HUOSING: PA9T HIGH-TEMP THERMOPLASTIC UL94V-0 COLOR:CREAM-COLOURED
- TERMINAL:PHOSPHOR BRONZE
PLATING:1*''GOLD FLASH OVERALL 50~100*''NICKEL UNDER PLATED.

Ordering information

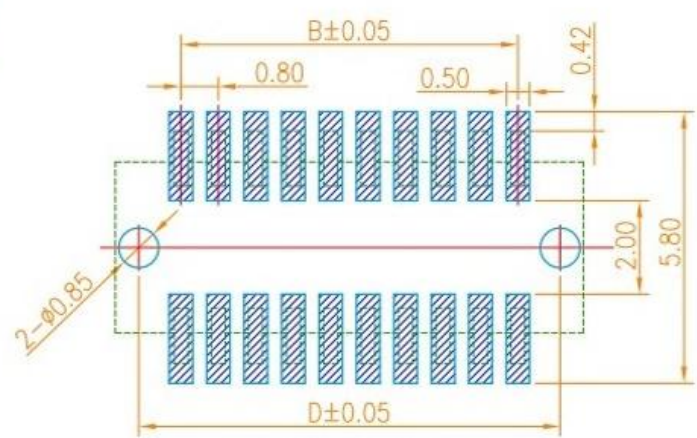
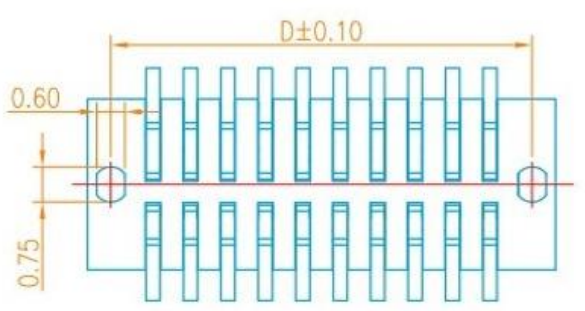
BTB	1. Male 2. Female	Pitch: 1.00±0.05mm 2.00±0.05mm	No. of PIN: (8-100P) 40-60P 18-15P	Combined High: 15:1.6mm 20:2.0mm 25:2.5mm 30:3.0mm 35:3.5mm 40:4.0mm 45:4.8mm 50:5.0mm 60:6.0mm	Welding: S:180° R:90° E:SMT V:90° SMT	Contact Plating: G0:gold flash G1:30° G2:50° G3:100°	Plastic Material: 1:PET 2:PA66 3:PAET 4:PCBT 5:LCF	Packing: 1:bag 2:Tube 3:Box 4:Reel
-----	----------------------	--------------------------------------	---	--	---	--	---	--



3D VIEW



NO. of contacts	Dimensions			
	A	B	C	D
4	3.60	0.80	2.40	2.60
6	4.40	1.60	3.20	3.40
8	5.20	2.40	4.00	4.20
10	6.00	3.20	4.80	5.00
12	6.80	4.00	5.60	5.80
14	7.60	4.80	6.40	6.60
16	8.40	5.60	7.20	7.40
18	9.20	6.40	8.00	8.20
20	10.00	7.20	8.80	9.00
22	10.80	8.00	9.60	9.80
24	11.60	8.80	10.40	10.60
26	12.40	9.60	11.20	11.40
28	13.20	10.40	12.00	12.20
30	14.00	11.20	12.80	13.00
32	14.80	12.00	13.60	13.80
34	15.60	12.80	14.40	14.60
36	16.40	13.60	15.20	15.40
38	17.20	14.40	16.00	16.20
40	18.00	15.20	16.80	17.00
42	18.80	16.00	17.60	17.80
44	19.60	16.80	18.40	18.60
46	20.40	17.60	19.20	19.40
48	21.20	18.40	20.00	20.20
50	22.00	19.20	20.80	21.00
52	22.80	20.00	21.60	21.80



RECOMMENDED PCB PATTERN DIM.

TOLERANCE : ±0.05

广东科斯达科技有限公司

一般公差 GENERAL TOLERANCE X Y Z MESH ANGLES	Kevin 2007.07.08	品名(TITLE): BTB 0.8 2*NP SMT 侧插母座
审核(CHECK):	料号(PART NO):	比例(SCALE): 1:8
版本(REV):	核准(APPR):	单位(UNITS): mm
修订(SH)	修改摘要 REVISION DESCRIPTION	张数(SHEET): 1 OF 1
签名(SIGNATURE)	日期 DATE	图幅(SIZE): A1

