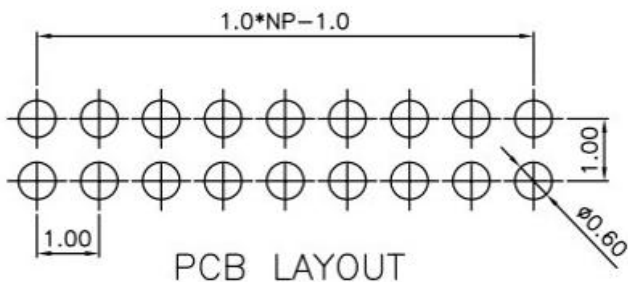
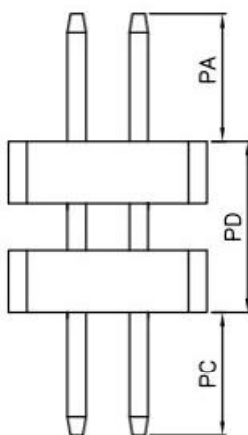
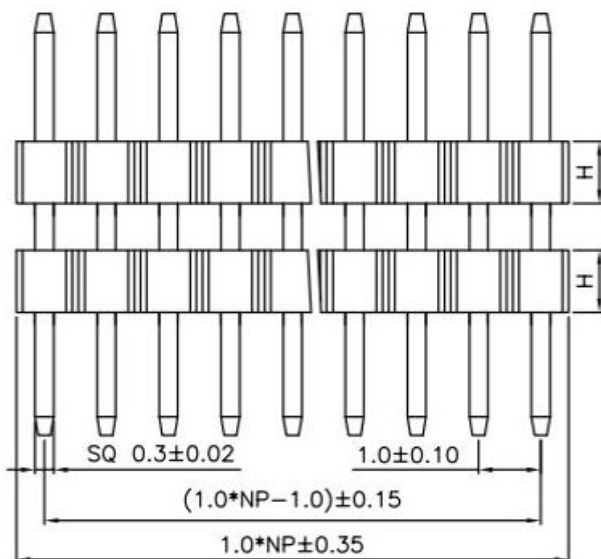
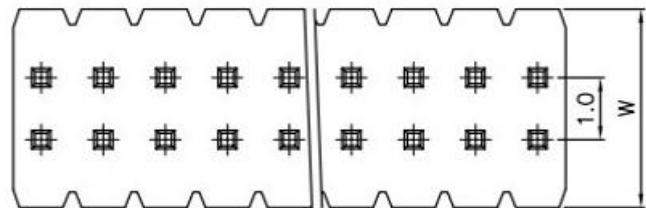


RoHS

REV	ECN NO	DESCRIPTION	DATE	NAME
A		NEW		



Specifications

1. Current Rating: 0.75Amps
2. Insulation Resistance: 1000 MΩ min.
3. Dielectric withstanding Voltage: 500V AC/DC
4. Contact Resistance: 30 mΩ max.
5. Operating Temperature: -40°C to +105°C
6. Contact Material: Brass
7. Insulation Material: As follows, UL94V-0, Black
8. Plated: Au Over Ni

Ordering Information

Insulation Height*Wide (H*W) Option: 10=1.0*3.2 15=1.5*2.3 15=1.5*3.2	NO. of Pins Per Row: 1-50P	Insulation Material Option: 1=PBT 2=PPS 3=NY6T 4=LCP 5=NY66 6=Customized 7=NY46 8=NY9T	Contact Plating 0=0.8" Gold 1=Au1" Gold 2=Au1.5" Gold 3=Au2" Gold 4=Au3" Gold 5=Au5" Gold 6=Customized 7=Gold/Tin 8=Tin	Serial NO. 01-69	Packing A=PE Bag B=Tube C=Tray D=Reel
---	-------------------------------	---	--	---------------------	---

Dimension antitheses list					
ITEM	PD	PC	PA	H	Pin Length
Standard	3.00	2.00	2.00	1.00	7.00
Alternate					

广东科斯达开关厂

STANDARD TOLERANCE (EXCEPT SPECIFIED)	
LINER	ANGLES
.0	±0.30 0.° ±3°
.00	±0.20 .0° ±2°
.000	±0.10 .00° ±1°

TITLE	PH1.0mm Pin Header Dual Row 180°	DRAWN BY	YTT	16.02.03
PART NO		CHECKED BY		
DRAWING NO		APPROVED BY		
SCALE	1:1	UNITE	mm	PAGE 1/1
				SIZE A4