

RoHS

REV	ECN NO	DESCRIPTION	DATE	NAME
A		NEW		

Note:

1. Material

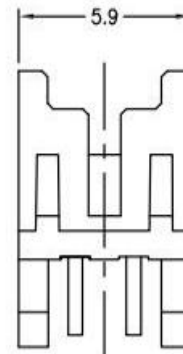
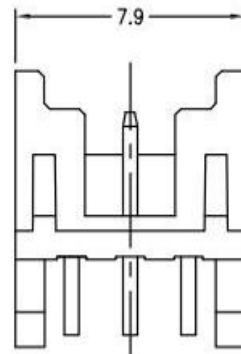
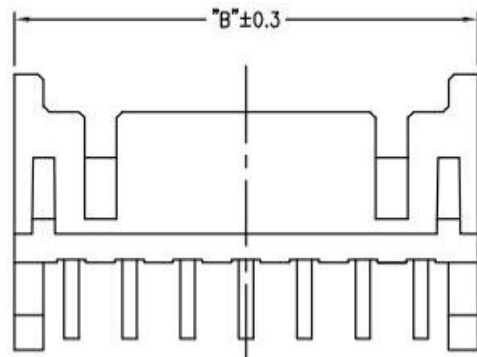
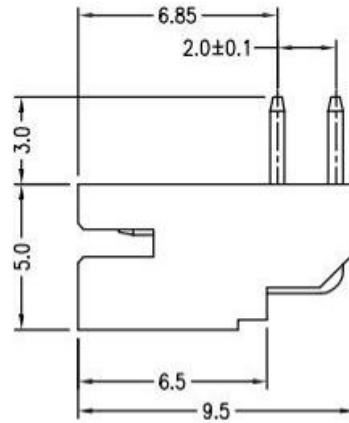
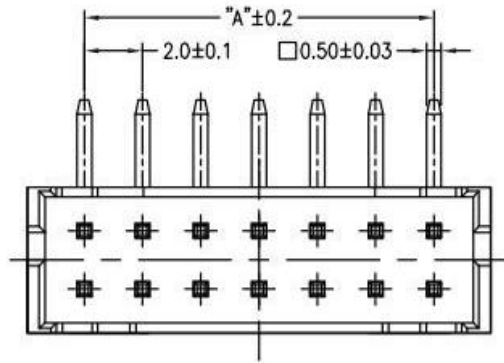
- 1.1: Housing: NY46 UL94V-0 Color:Nature.
- 1.2: Contact: Brass,Tin.

2. Rating:

- 2.1: Operating Voltage: 125V AC/DC.
- 2.2: Current Rating: 2A AC/DC.
- 2.3: Operating Temperature: -25°C~+85°C.
- 2.4: Contact Resistance: 30 mΩ max.
- 2.5: Insulation Resistance: 1000 MΩ min.
- 2.6: Dielectric withstanding Voltage: AC 500V
- 2.7: Applicable Wire: AWG#24~#30

3. Part Number:

PIN NO.	DIM. A	DIM. B
2x2P	2.0	5.9
2x3P	4.0	7.9
2x4P	6.0	9.9
2x5P	8.0	11.9
2x6P	10.0	13.9
2x7P	12.0	15.9
2x8P	14.0	17.9
2x9P	16.0	19.9
2x10P	18.0	21.9
2x11P	20.0	23.9
2x12P	22.0	25.9
2x13P	24.0	27.9
2x14P	26.0	29.9
2x15P	28.0	31.9
2x16P	30.0	33.9
2x17P	32.0	35.9
2x18P	34.0	37.9
2x19P	36.0	39.9
2x20P	38.0	41.9

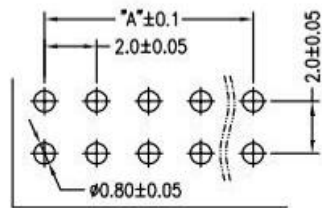
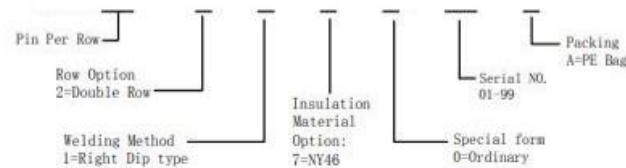


2x4P~2x20P

2x3P

2x2P

Ordering Information



P.C.B. LAYOUT

STANDARD TOLERANCE (EXCEPT SPECIFIED)

LINER		ANGLES	
.0	±0.30	0.°	±3°
.00	±0.20	.0°	±2°
.000	±0.10	.00°	±1°

广东科斯达开关厂

TITLE	PH2.0mm Wafer Double row, Right Dip type	DRAWN BY	WZG	17.03.30
PART NO		CHECKED BY		
DRAWING NO		APPROVED BY		
SCALE	1:1	UNIT	mm	PAGE 1/1
				SIZE A4