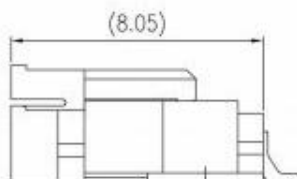
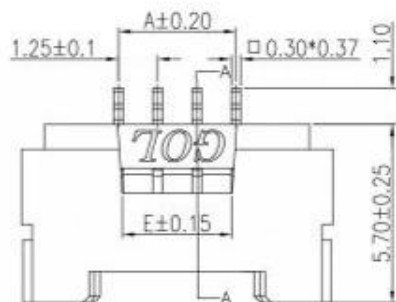


RoHS Compliant

REV.	ECN.NO.	MODIFY.CONTENT	DATE
A		NEW VERSION	09/11'16

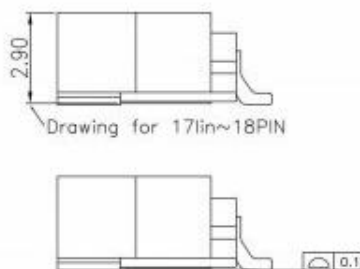
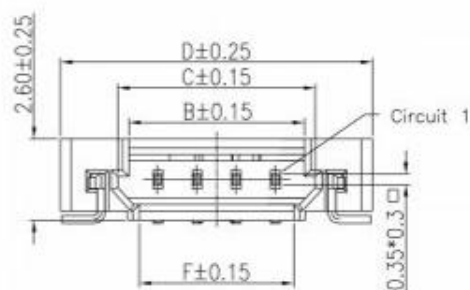


MATERIALS

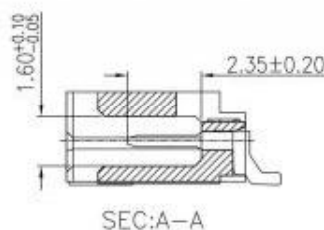
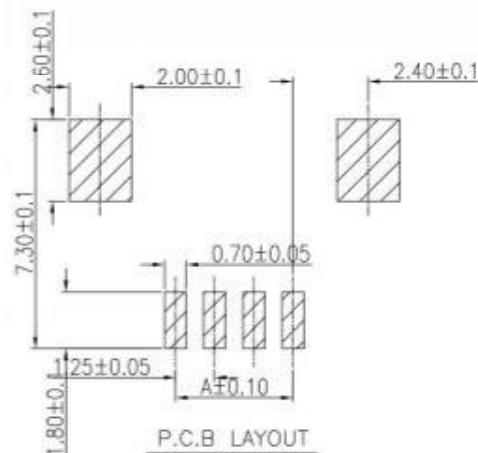
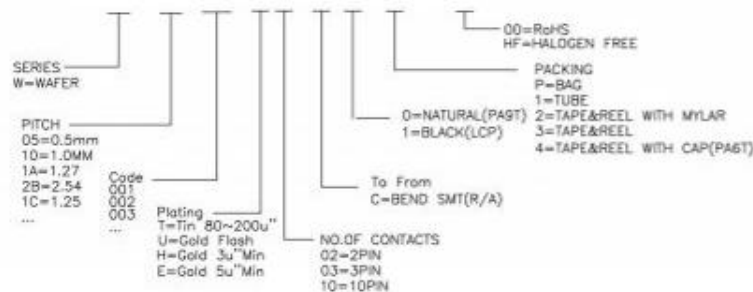
Insulator :High temperature plastic,UL94V-0
 Contact :Copper Alloy
 Contact Plating :Gold flash or Tin over Nickel 30~120u"
 (See Part no.):

SPECIFICATIONS

Solder Plating :
 Current Rating :1A
 Operation Temperature :-25°C to +85°C
 Insulation Resistance :500MΩ Min
 contact resistance :20mΩ Max
 Processing Temperature :260°C for 10 seconds



PART NO.:



18	21.25	22.83	23.81	27.45	5.00	22.43
17	20.00	21.58	22.56	26.20	5.00	21.18
16	18.75	20.33	21.31	24.95	5.00	19.93
15	17.50	19.08	20.06	23.70	5.00	18.68
14	16.25	17.83	18.81	22.45	5.00	17.43
13	15.00	16.58	17.56	21.20	5.00	16.18
12	13.75	15.33	16.31	19.95	5.00	14.93
11	12.50	14.08	15.06	18.70	5.00	13.68
10	11.25	12.83	13.81	17.45	3.50	12.43
09	10.00	11.58	12.56	16.20	3.50	11.18
08	8.75	10.33	11.31	14.95	3.50	9.93
07	7.50	9.08	10.06	13.70	3.50	8.68
06	6.25	7.83	8.81	12.45	3.50	7.43
05	5.00	6.58	7.56	11.20	3.50	6.18
04	3.75	5.33	6.31	9.95	3.50	4.93
03	2.50	4.08	5.06	8.70	3.50	3.68
02	1.25	2.83	3.81	7.45	3.50	2.43
PIN #	A	B	C	D	E	F

GENERAL TOLERANCE		DRAWN	VICENT.YAO	09'11/16	SCALE	PART NO.
X.±0.30	x.'±3'	CHECKED	RYAN.LAI	09'11/16	4/1	TITLE
.X±0.25	.x'±2'	APPROVED	RAY LEE	09'11/16	UNITS	mm
.XX±0.20		File NO.				CUSTOMER DRAWING
.XXX±0.10		REV.				
SHEET	1/1	Q'TY	1	A		

广东科斯达开关厂