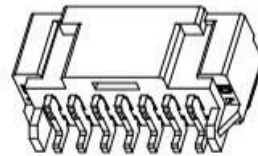
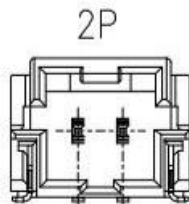
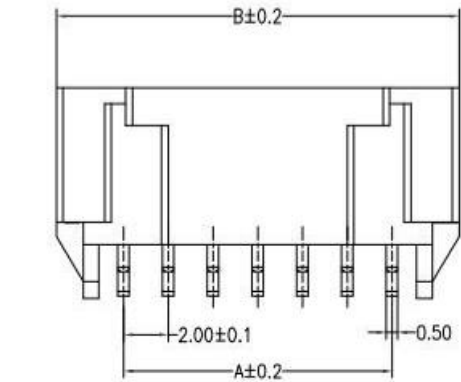
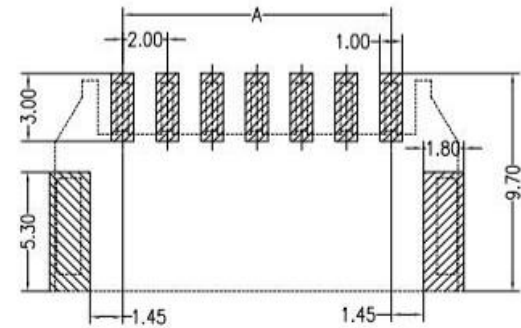


**RoHS**



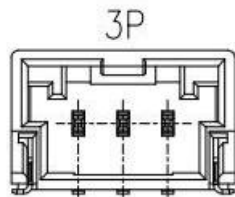
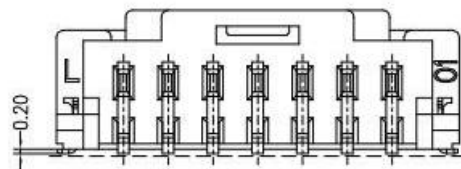
REV	ECN NO	DESCRIPTION	DATE	NAME
A	—	NEW	11/23-'19	HYJ

**PCB LAYOUT**



**Main Specifications**

Poles: 02 to 15  
 Contact resistance:  $\leq 20m \Omega$   
 Insulation resistance:  $\geq 1000M \Omega$   
 Rated voltage: 250V AC DC  
 Rated current: 3.0A AC DC  
 Withstand Voltage: 500V AC/minute  
 Temperature Range: -40° C~+105° C



0.1

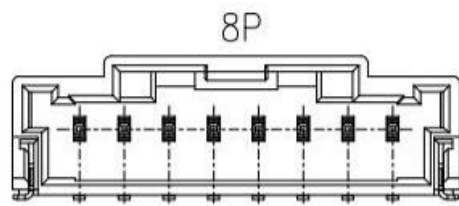
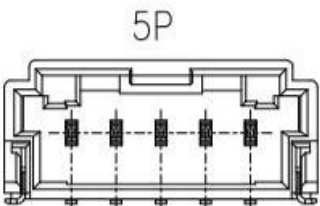
**ORDER INFORMATION:**



PIN.	DIM A	DIM B	DIM C
2pin	2.00	8.00	4.80
3pin	4.00	10.00	6.80
4pin	6.00	12.00	8.80
5pin	8.00	14.00	10.80
6pin	10.00	16.00	12.80
7pin	12.00	18.00	14.80
8pin	14.00	20.00	16.80
9pin	16.00	22.00	18.80
10pin	18.00	24.00	20.80
11pin	20.00	26.00	22.80
12pin	22.00	28.00	24.80
13pin	24.00	30.00	26.80
14pin	26.00	32.00	28.80
15pin	28.00	34.00	30.80

ITEM	COMPONENT	Q'TY	MATERIAL	FINISH
C	SOLDER TAB	2 PCS	PhosphorBronze	MATTE Sn-plated
B	CONTACT	2~15 PCS	PhosphorBronze	MATTE Sn-plated
A	HOUSING	1 PCS	PA9T	UL 94V-0, COLOR:BEIGE

**广东科斯达开关厂**



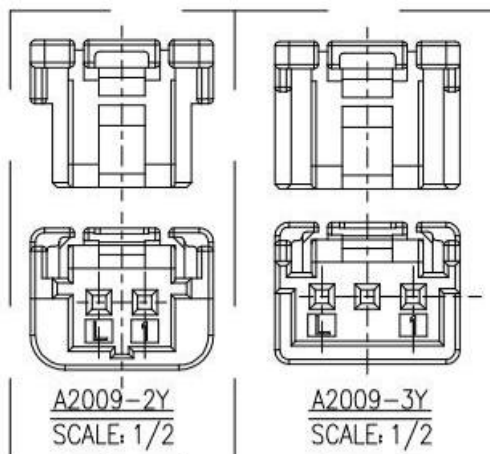
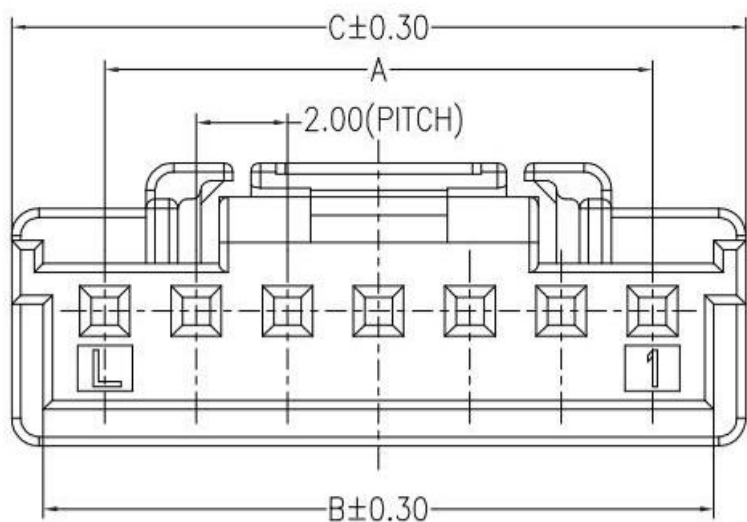
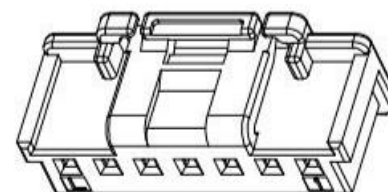
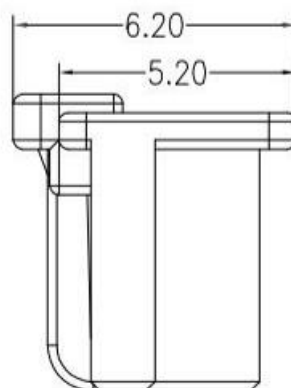
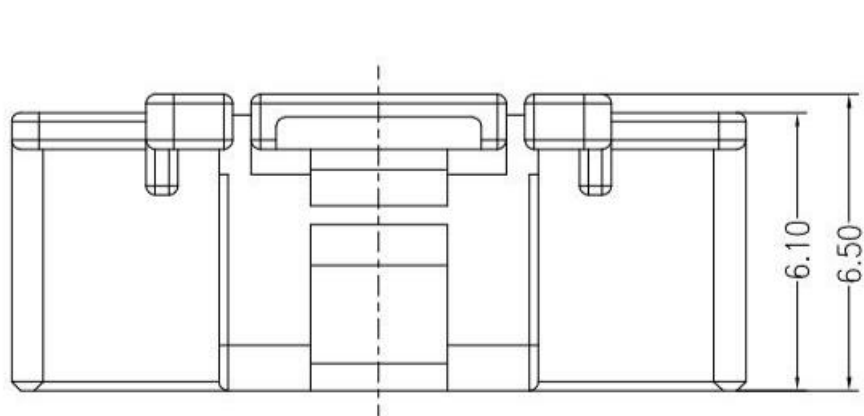
STANDARD TOLERANCE  
(EXCEPT SPECIFIED)

LINER	ANGLES
.0 ±0.30	0.° ±3°
.00 ±0.20	.0° ±2°
.000 ±0.10	.00° ±1°

TITLE	L2009AWR 2.00mm PITCH 90° WAFER SMT TYPE	DRAWN BY	HYJ	11/23-'19			
PART NO		CHECKED BY					
DRAWING NO		APPROVED BY					
SCALE	1:1	UNIT	mm	PAGE	1/1	SIZE	A4

# RoHS

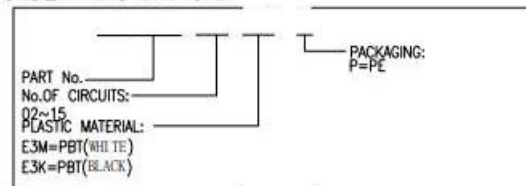
REV	ECN NO	DESCRIPTION	DATE	NAME
A	—	NEW	11/23-'19	HYJ



### Main Specifications

Poles: 02 to 15  
 Material: PBT UL94V-0  
 Contact resistance:  $\leq 10m \Omega$   
 Insulation resistance:  $\geq 1000M \Omega$   
 Rated voltage: 250V AC DC  
 Rated current: 3.0A AC DC  
 Withstand Voltage: 500V AC/minute  
 Temperature Range:  $-40^{\circ}C \sim +105^{\circ}C$

### ORDER INFORMATION:



PIN	DIM A	DIM B	DIM C	PIN	DIM A	DIM B	DIM C
2pin	2.00	4.70	8.00	9pin	16.00	18.70	20.10
3pin	4.00	6.70	8.10	10pin	18.00	20.70	22.10
4pin	6.00	8.70	10.10	11pin	20.00	22.70	24.10
5pin	8.00	10.70	12.10	12pin	22.00	24.70	26.10
6pin	10.00	12.70	14.10	13pin	24.00	26.70	28.10
7pin	12.00	14.70	16.10	14pin	26.00	28.70	30.10
8pin	14.00	16.70	18.10	15pin	28.00	30.70	32.10

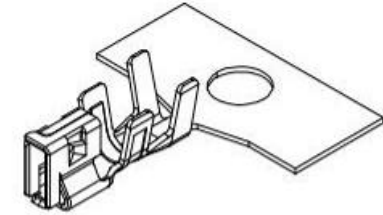
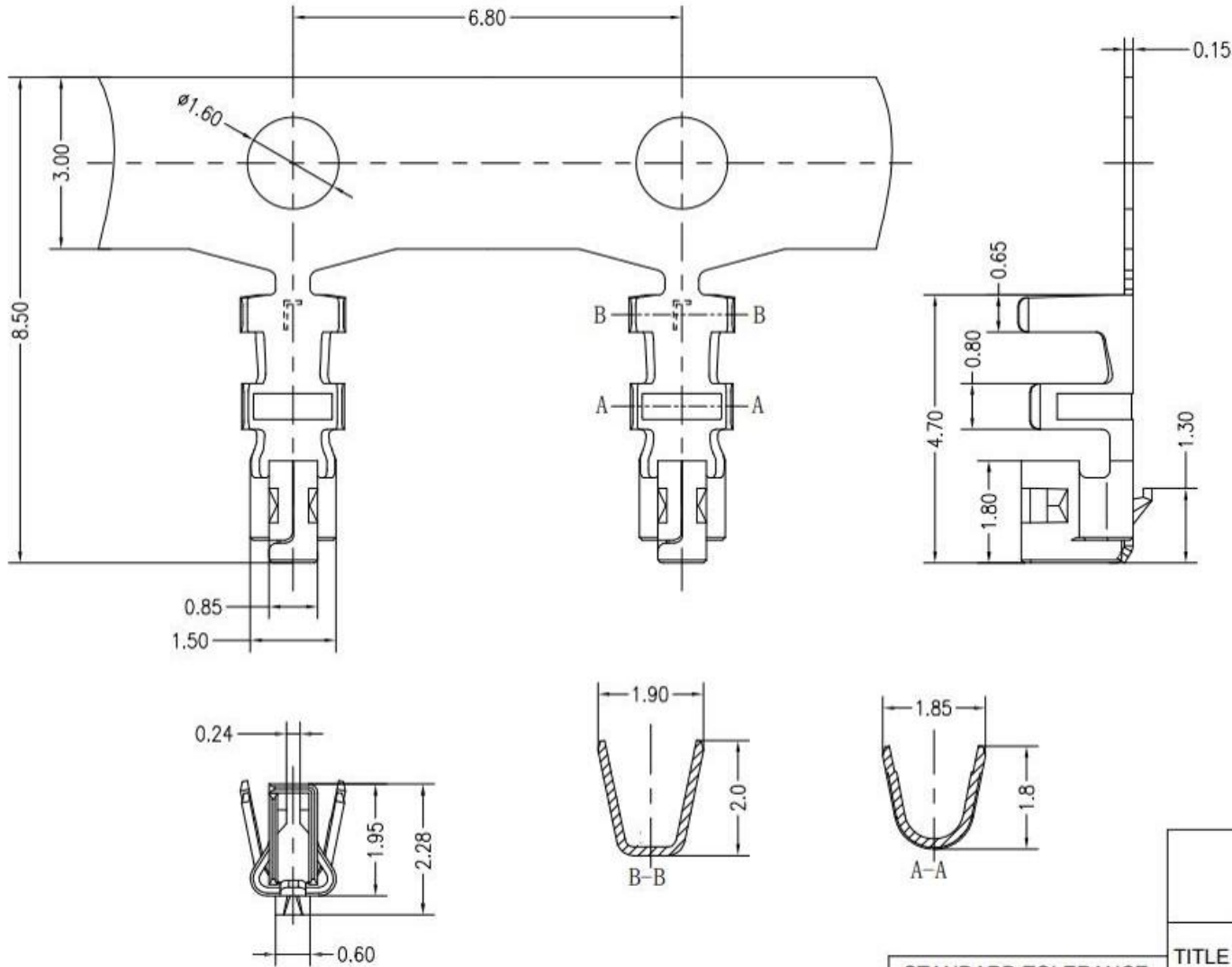
STANDARD TOLERANCE (EXCEPT SPECIFIED)	
LINER	ANGLES
.0 ±0.30	0.° ±3°
.00 ±0.25	.0° ±2°
.000 ±0.10	.00° ±1°

# 广东科斯达开关厂

TITLE	L2009Y 2.0MM PITCH Housing	DRAWN BY	HYJ	11/23-'19
PART NO		CHECKED BY		
DRAWING NO		APPROVED BY		
SCALE	1:1	UNIT	mm	PAGE 1/1
				SIZE A4

# RoHS

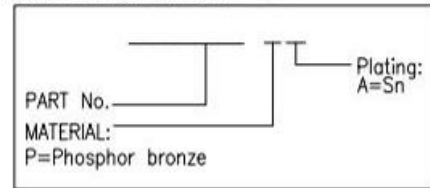
REV	ECN NO	DESCRIPTION	DATE	NAME
A	—	NEW	11/23-'19	HYJ



**NOTES:**

1. Material: Phosphor bronze C5191R-H, T=0.15mm
2. Plating: Sn 100-200u"
3. The surface of terminal should be smooth and smooth without burr and crack
- 4 Wire Range :AWG #22-#26
- 5 Insulation Range:  $\phi 1.4$  Max

**ORDER INFORMATION:**



## 广东科斯达开关厂

**STANDARD TOLERANCE (EXCEPT SPECIFIED)**

LINER		ANGLES	
.0	$\pm 0.30$	0.°	$\pm 3^\circ$
.00	$\pm 0.25$	.0°	$\pm 2^\circ$
.000	$\pm 0.10$	.00°	$\pm 1^\circ$

TITLE	L2009T 2.0MM PITCH Terminal	DRAWN BY	HYJ	11/23-'19
PART NO		CHECKED BY		
DRAWING NO		APPROVED BY		
SCALE	1:1	UNIT	mm	
PAGE	1/1	SIZE	A4	