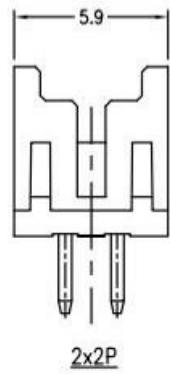
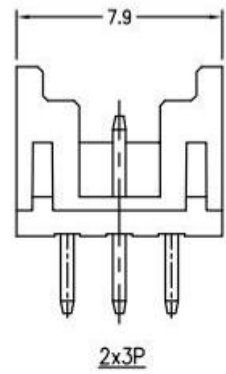
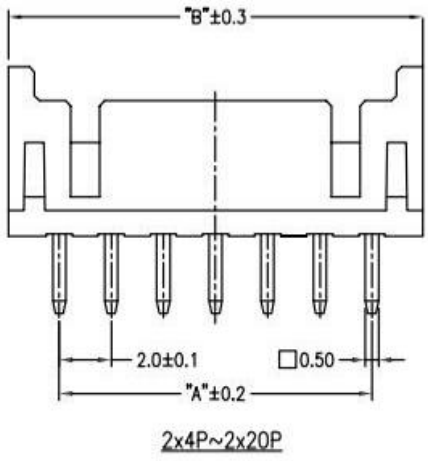
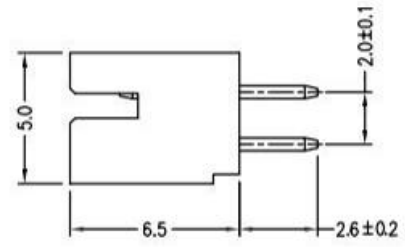
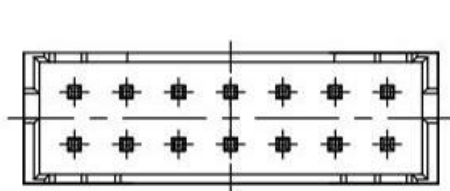


# RoHS

REV	ECN NO	DESCRIPTION	DATE	NAME
A		NEW		

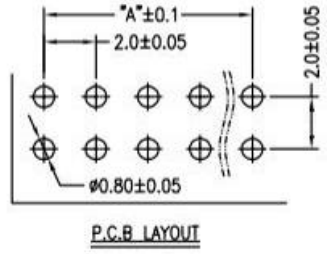
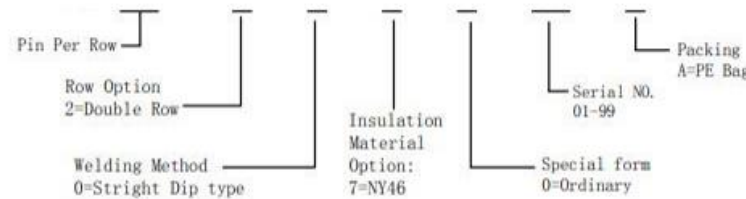
Note:

1. Material
  - 1.1: Housing: NY46 UL94V-0 Color:Nature.
  - 1.2: Contact: Brass,Tin.
2. Rating:
  - 2.1: Operating Voltage: 125V AC/DC.
  - 2.2: Current Rating: 2A AC/DC.
  - 2.3: Operating Temperature: -25°C~+85°C.
  - 2.4: Contact Resistance: 30 mΩ max.
  - 2.5: nsulation Resistance: 1000 MΩ min.
  - 2.6: Dielectric withstanding Voltage: AC 500V
  - 2.7: Applicable Wire: AWG#24~#30
3. Pater Number:



PIN NO.	DIM.A	DIM.B
2x2P	2.0	5.9
2x3P	4.0	7.9
2x4P	6.0	9.9
2x5P	8.0	11.9
2x6P	10.0	13.9
2x7P	12.0	15.9
2x8P	14.0	17.9
2x9P	16.0	19.9
2x10P	18.0	21.9
2x11P	20.0	23.9
2x12P	22.0	25.9
2x13P	24.0	27.9
2x14P	26.0	29.9
2x15P	28.0	31.9
2x16P	30.0	33.9
2x17P	32.0	35.9
2x18P	34.0	37.9
2x19P	36.0	39.9
2x20P	38.0	41.9

## Ordering Information



STANDARD TOLERANCE (EXCEPT SPECIFIED)			
LINER		ANGLES	
.0	±0.30	0.°	±3°
.00	±0.20	.0°	±2°
.000	±0.10	.00°	±1°

# 广东科斯达开关厂

TITLE		DRAWN BY		DATE	
PH2.0mm Wafer Double row, Stright Dip type		WZG		17.03.30	
PART NO		CHECKED BY			
DRAWING NO		APPROVED BY			
SCALE	UNIT	PAGE	SIZE		
1:1	mm	1/1	A4		