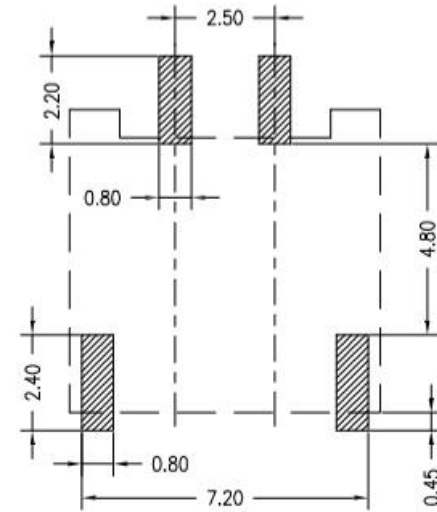
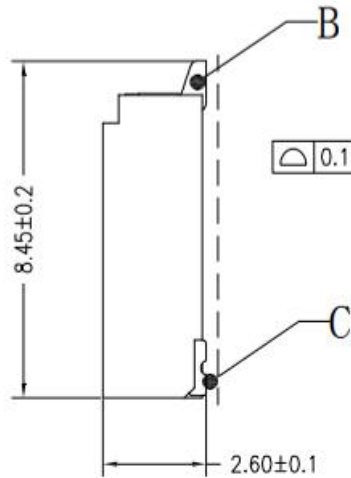
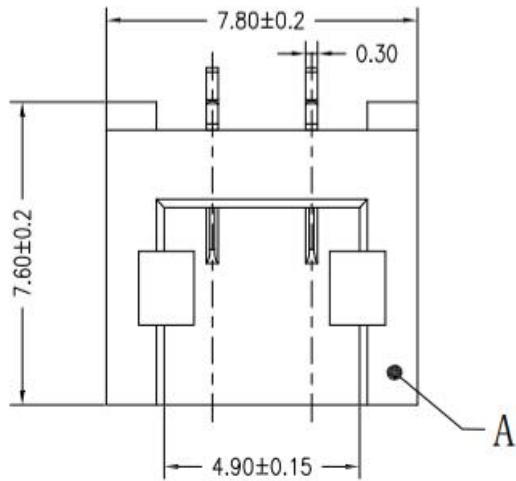
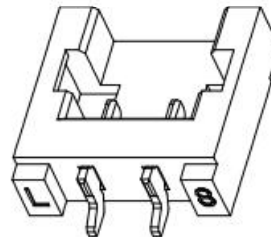
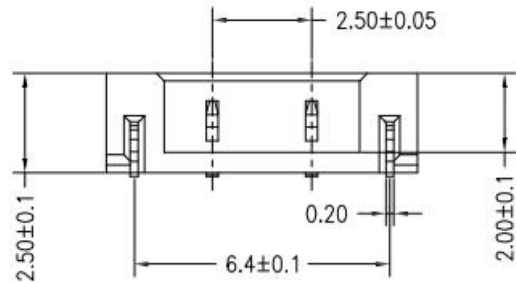


RoHS

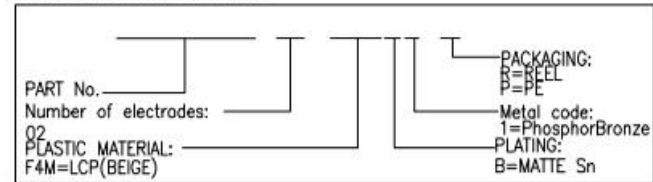
REV	ECN NO	DESCRIPTION	DATE	NAME
A		NEW	11/23-'19	LZM



Board Layout



ORDER INFORMATION:



主要技术参数 Main Specifications

- 线 数 (Poles) :02
- 接触电阻 (Contact resistance):≤20m Ω
- 绝缘电阻 (Insulation resistance):≥1000M Ω
- 额定电压 (Rated voltage):250V AC DC
- 额定电流 (Rated current):2.0A AC DC
- 耐 电压 (Withstand Voltage):1000V AC/minute
- 温度范围 (Temperature Range):-25°C~+105°C

ITEM	COMPONENT	Q'TY	MATERIAL	FINISH
C	SOLDER TAB	2 PCS	PhosphorBronze	MATTE SN
B	CONTACT	2 PCS	PhosphorBronze	MATTE SN
A	HOUSING	1 PCS	LCP	UL 94V-0, COLOR:BEIGE

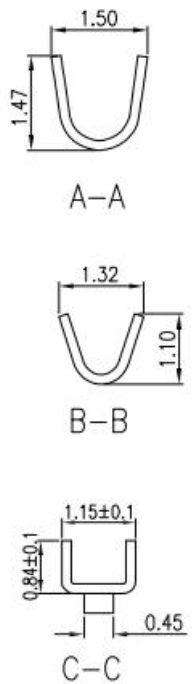
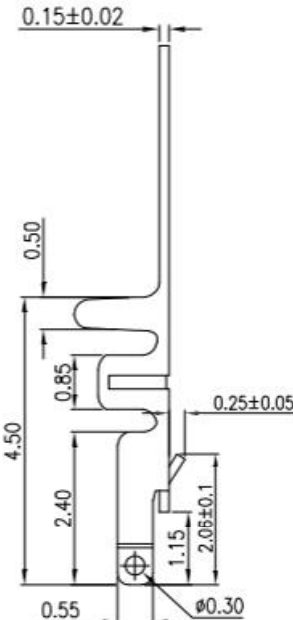
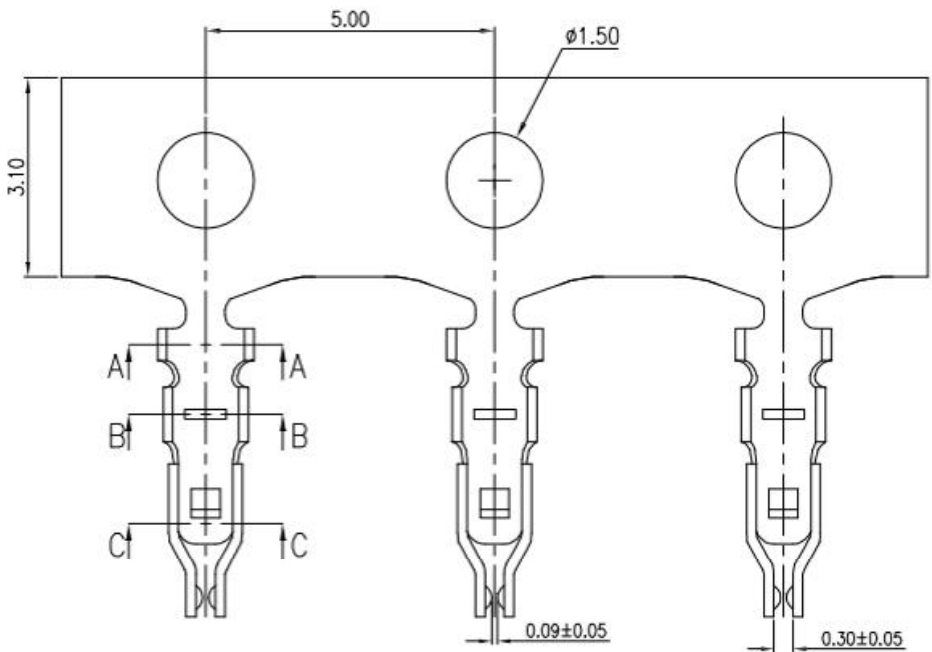
STANDARD TOLERANCE (EXCEPT SPECIFIED)	
LINER	ANGLES
.0 ±0.30	0.° ±3°
.00 ±0.20	.0° ±2°
.000 ±0.10	.00° ±1°

广东科斯达开关厂

TITLE	2.5mm PITCH 90° WAFER SMT TYPE	DRAWN BY	LZM	11/23-'19
PART NO		CHECKED BY		
DRAWING NO		APPROVED BY		
SCALE	1:1	UNIT	mm	
PAGE	1/1	SIZE	A4	

REV	ECN NO	DESCRIPTION	DATE	NAME
A	—	NEW	11/23-'19	LZM

RoHS



主要技术参数 Main Specifications

- 接触电阻 (Contact resistance): $\leq 20m \Omega$
- 绝缘电阻 (Insulation resistance): $\geq 1000M \Omega$
- 额定电压 (Rated voltage): 250V AC DC
- 额定电流 (Rated current): 2.0A AC DC
- 耐电压 (Withstand Voltage): 1000V AC/minute
- 温度范围 (Temperature Range): $-25^{\circ}C \sim +85^{\circ}C$

Ordering Information & Specification:

Part No	Wire Range	Insulation O. D.	Material	Finish
L2503T-PA	AWG #26~#30	1.00mm (MAX)	Phosphor bronze	Nickel 20u~80u Over ALL. T-Tin 80u~120u Over Nickel 0-Gold Flash(0.8u) Over Nickel

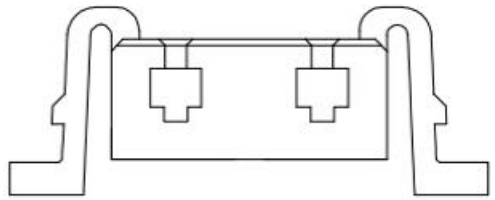
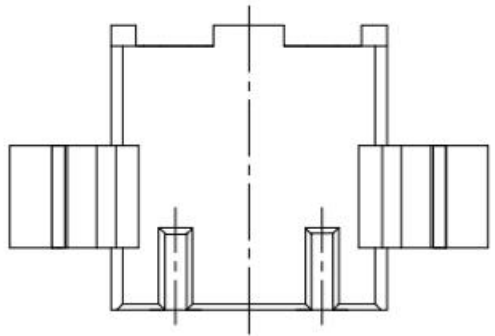
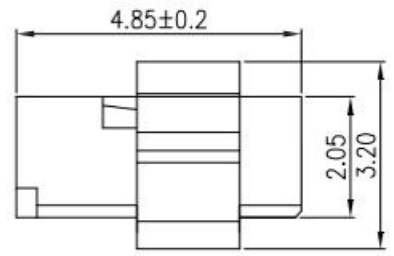
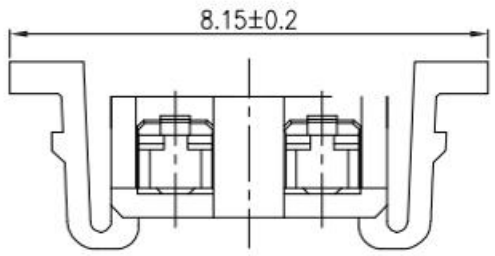
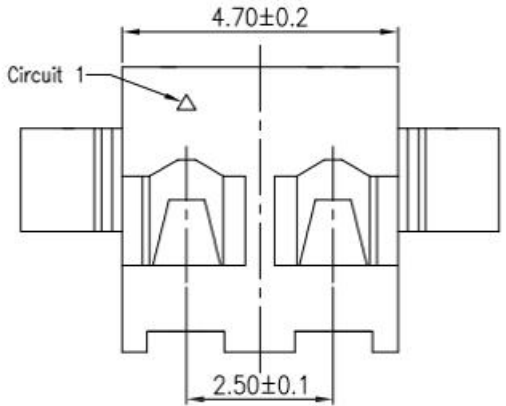
STANDARD TOLERANCE (EXCEPT SPECIFIED)	
LINER	ANGLES
.0 ±0.30	0.° ±3°
.00 ±0.25	.0° ±2°
.000 ±0.10	.00° ±1°

广东科斯达开关厂

TITLE	L2503T-02 Contact	DRAWN BY	LZM	11/23-'19
PART NO		CHECKED BY		
DRAWING NO		APPROVED BY		
SCALE	1:1	UNIT	mm	PAGE 1/1
				SIZE A4

REV	ECN NO	DESCRIPTION	DATE	NAME
A	—	NEW	11/21-'19	LZM

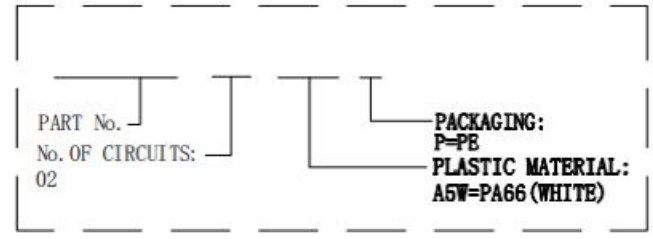
RoHS



主要技术参数 Main Specifications

- 线 数 (Poles) :02
- 接触电阻 (Contact resistance):≤20m Ω
- 绝缘电阻 (Insulation resistance):≥1000M Ω
- 额定电压 (Rated voltage):250V AC DC
- 额定电流 (Rated current):2.0A AC DC
- 耐 电压 (Withstand Voltage):1000V AC/minute
- 温度范围 (Temperature Range):-25°C~+85°C

ORDER INFORMATION:



A	HOUSING	1 PCS	PA66	UL 94V-0, COLOR:White
ITEM	COMPONENT	Q'TY	MATERIAL	FINISH

广东科斯达开关厂

STANDARD TOLERANCE (EXCEPT SPECIFIED)	
LINER	ANGLES
.0 ±0.30	0.° ±3°
.00 ±0.20	.0° ±2°
.000 ±0.10	.00° ±1°

TITLE	L2503Y Housing	DRAWN BY	LZM	11/21-'19
PART NO		CHECKED BY		
DRAWING NO		APPROVED BY		
SCALE	1:1	UNIT	mm	
PAGE	1/1	SIZE	A4	