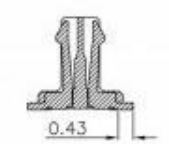
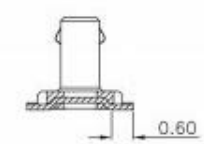
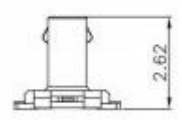
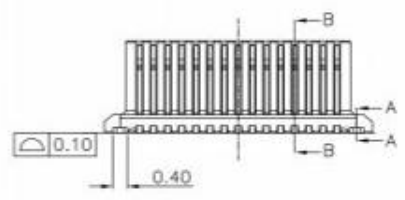
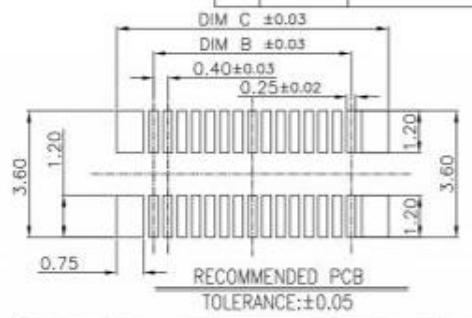
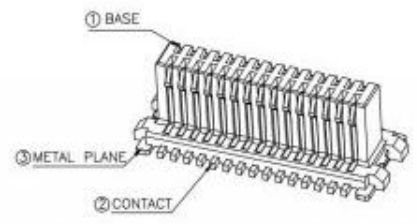
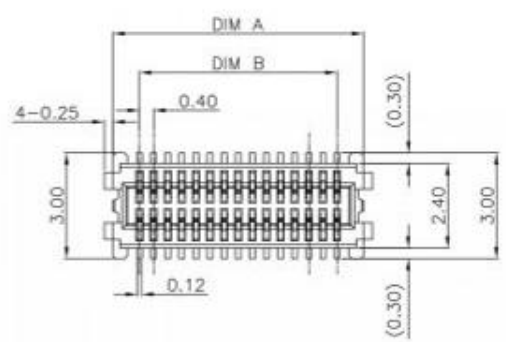


REV.	ECN.NO.	MODIFY.CONTENT	DATE
A		FIRST VERSION	04/11'19



SECTION A-A

SECTION B-B

DIM.A	DIM.B	DIM.C	DIM.D	PIN NO.
5.10	3.60	5.70	8.90	20 PIN
7.10	5.60	7.70	10.90	30 PIN
8.30	6.80	8.90	12.10	36 PIN
9.10	7.60	9.70	12.90	40 PIN
11.10	9.60	11.70	14.90	50 PIN
13.10	11.60	13.70	16.90	60 PIN

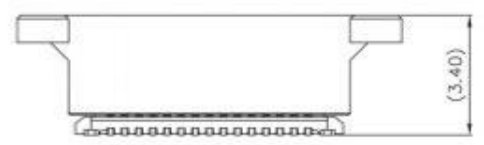
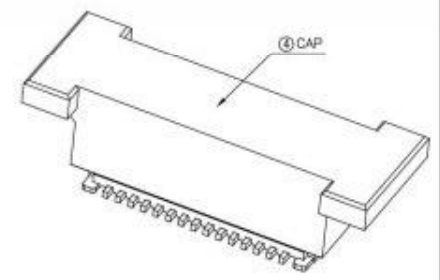
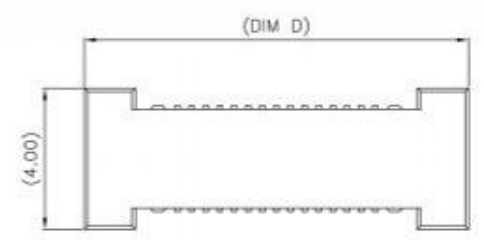
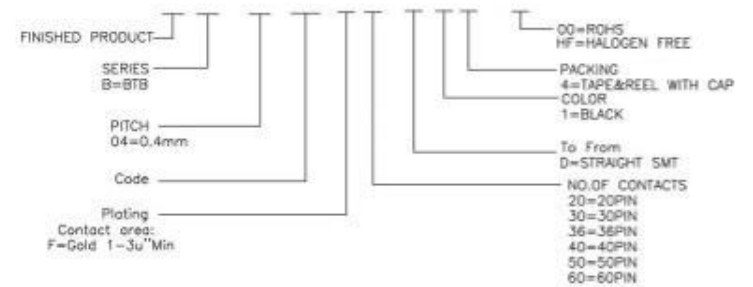
**MATERIALS**

Housing :LCP,UL94V-0, Black  
 Contact :Brass  
 Contact Plating :Gold flash or Tin over Nickel 30~150u"  
 Metal Plane : Brass  
 Metal Plane Plating : 100~200u" Tin over Nickel 30~150u"

**SPECIFICATIONS**

Current Rating :0.3A  
 Operation Temperature :-40°C to +85°C  
 Insulation Resistance :100MΩ Min  
 contact resistance :100mΩ Max  
 Durability : 30cycles.

PART NO.:



WITH CAP

GENERAL TOLERANCE		DRAWN	Wilson Sun	2019.4.20	SCALE	PART NO.	1B0414RF**D14-HF
X.±0.30	x.'±3.0'	CHECKED	Shengjie Chu	2019.4.20	5/1	TITLE	0.4 PITCH BTB REC.
.X±0.25	.x'±2.0'	APPROVED	Cunfa Lai	2019.4.20	UNITS	mm	CUSTOMER DRAWING
.XX±0.20		File NO.					
.XXX±0.10		REV.					
SHEET	1/1	QTY	1	A			

**广东科斯达开关厂**

此文件为双方检验的唯一标准  
 This document is the only standard for inspection by both parties.