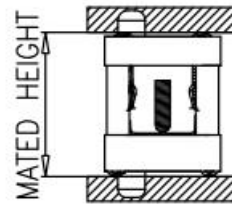
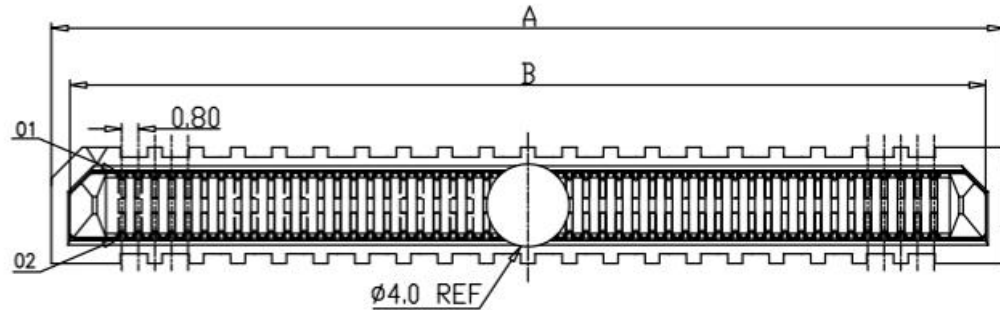


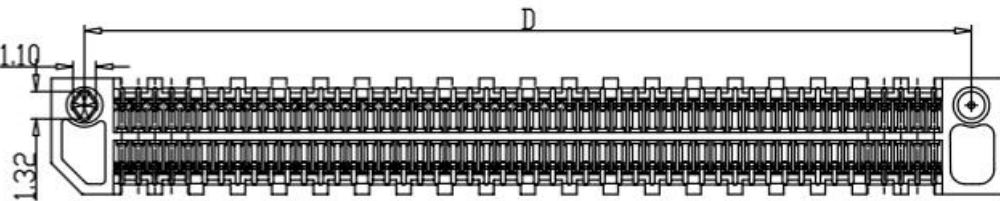
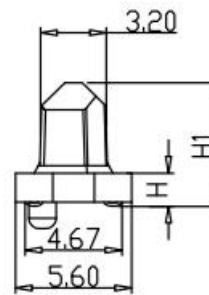
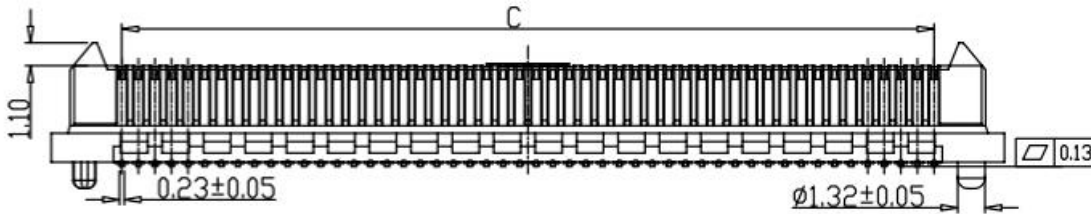
# RoHS

REV	ECN NO	DESCRIPTION	DATE	NAME
A	—	NEW	11/11-'20	ZW

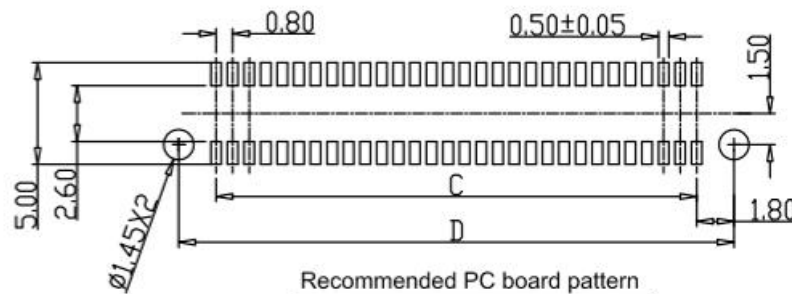


## Ordering Information

Pitch 080=0.8	NO. of Pins Per Row: 01-99P	Insulation Height 20=2.0MM 50=5.0MM 80=8.0MM 90=9.0MM	product type D:DIP-180 R:DIP-90 S:SMT 3.5mm L:SMT 2.5mm A:DIP+SMT W:DIP 2.5mm Q:DIP 3.5mm C:Crimping 7.5mm	Insulator Material 1:PBT 2:LCP 3:NY46 4:NY66 5:NY6T 6:NY9T	Contact Plating G:G/F 1: Au1u" 2: Au3u" 3: Au5u" 4: Au10u" 5: Au15u" 6: Au30u" 7:Gold/TIn 8: TIn 9: Customized	Serial NO. 01-99	Packing A=PE Bag B=Tube C=Tray D=Reel
------------------	-----------------------------------	--	--	---	---	---------------------	---



POSITION	A	B	C	D
10	10.00	8.20	3.20	6.80
20	14.00	12.20	7.20	10.80
22	14.80	13.00	8.00	11.60
24	15.60	13.80	8.80	12.40
26	16.40	14.60	9.60	13.20
30	18.00	16.20	11.20	14.80
40	22.00	20.20	15.20	18.80
50	26.00	24.20	19.20	22.80
60	30.00	28.20	23.20	26.80
70	34.00	32.20	27.20	30.80
80	38.00	36.20	31.20	34.80
100	46.00	44.20	39.20	42.80
120	54.00	52.20	47.20	50.80
140	62.00	60.20	55.20	58.80
150	66.00	64.20	59.20	62.80
200	86.00	84.20	79.20	82.00



Recommended PC board pattern  
(TOP VIEW)

MATED HEIGHT						
ERM8 LEAD STYLE	ERF8 LEAD STYLE			HEIGHT	H	H1
	5.0	7.0	9.0			
2.0	7.00	9.00	11.00	2.00	1.61	5.97
5.0	10.00	12.00	14.00	5.00	4.61	8.91
8.0	13.00	15.00	17.00	8.00	7.61	11.91
9.0	14.00	16.00	18.00	9.00	8.61	12.91

**SPECIFICATIONS**  
 1.CURRENT RATING:1.0A.  
 2.VOLTAGE RATING 300VA.  
 3.OPERATING TEMPERATURE RANGE:-55°C TO+125°C  
 4.OPERATING HUMIDITY RANGE:90% TO 95%.  
 5.WITHSTANDING VOLTAGE:500 VAC

STANDARD TOLERANCE (EXCEPT SPECIFIED)	
LINER	ANGLES
.0 ±0.30	0.° ±3°
.00 ±0.20	.0° ±2°
.000 ±0.10	.00° ±1°

# 广东科斯达开关厂

TITLE	ERM8 PH0.8 BTB 插头	DRAWN BY	ZW	11/11-'20
PART NO		CHECKED BY		
DRAWING NO		APPROVED BY		
SCALE	1:1	UNIT	mm	PAGE 1/1
				SIZE A4