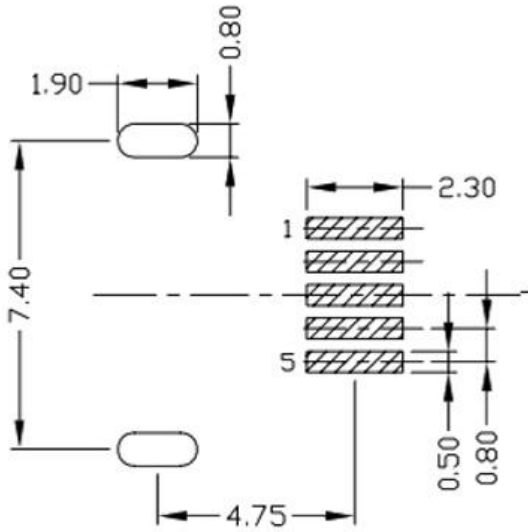
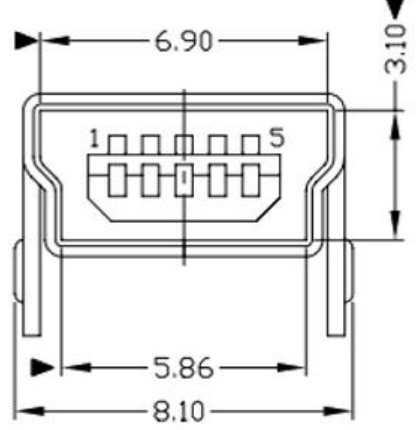
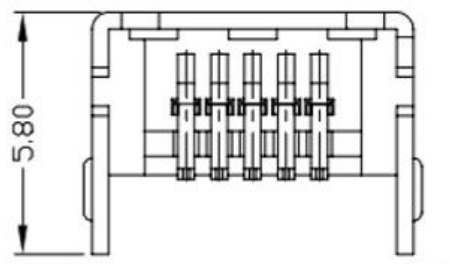
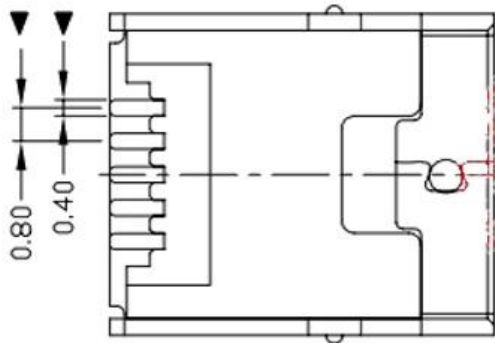
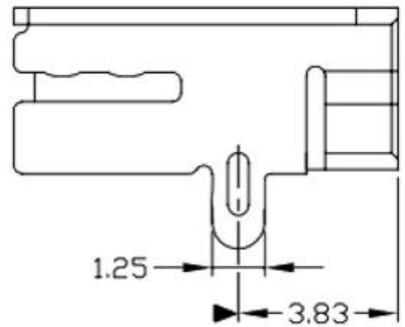
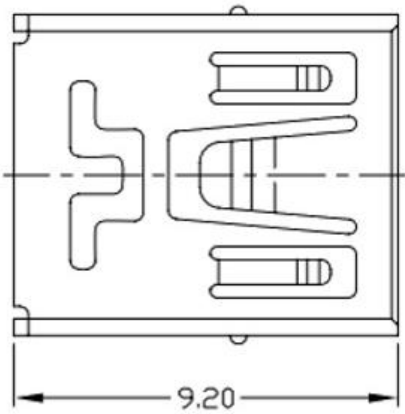


RoHS Compliant



RECOMMENDED PCB LAYOUT

NOTES:

1. ELECTRICAL:

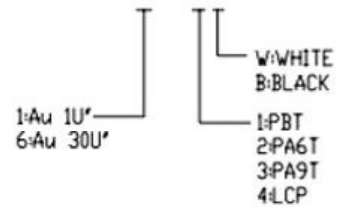
- 1) VOLTAGE CURRENT RATING: 1.0AMP,30V AC;
- 2) INSULATION RESISTANCE: 100MΩ MIN;
- 3) CONTACT RESISTANCE: 50mΩ MAX;
- 4) WITHSTANDING VOLTAGE: 300V AC;
- 5) OPERATING TEMPERATURE:-55°C TO +85°C.

2. Mechanical:

- 1) Mating Force: 30N MAX
- 2) Unmating Force: 7N MIN.

3. DIMENSIONS MARKED "▼" TO BE CHECKED BY Q.C & IPQC.

4.PART NO.



| ⑤   | MID PLATE  | 1   | STAINLESS STEEL | Au . PLATING. | T=0.15mm |
|-----|------------|-----|-----------------|---------------|----------|
| ④   | SHELL      | 1   | STAINLESS STEEL | Au . PLATING. | T=0.30mm |
| ③   | TERMINAL-B | 1   | TABLE 2:        | TABLE 2:      | T=0.12mm |
| ②   | TERMINAL-A | 1   | TABLE 2:        | TABLE 2:      | T=0.12mm |
| ①   | INSULATOR  | 1   | HIGH TEMP       | Black         |          |
| NO. | PART NAME  | QTY | MATERIAL        | DESCRIPTION   | REMARK   |

UNLESS OTHERWISE, GENERAL TOLERANCE:  
 X.xxx ±0.10  
 X.xx ±0.20  
 X.x ±0.30  
 X. ±0.38  
 ANGULAR:  
 X.xx ±1°  
 X.x ±3°  
 X. ±5°

广东科斯达开关厂

|                        |               |        |       |        |                               |
|------------------------|---------------|--------|-------|--------|-------------------------------|
| TITLE:                 | USB connector |        |       |        | P/N: Detail See PART NO. LIST |
| MODEL:                 |               |        |       |        | DRAW NO.:                     |
| THIRD ANGLE PROJECTION | UNIT:         | SCALE: | SIZE: | SHEET: |                               |
|                        | mm            | 1:1    | A4    | 1/1    |                               |

| JH2016-080  | X2   | 随工程图上升版本次   | 2016.06.15 | 陈少兵    | DESIGN   | 陈少兵 | 2016.06.15 |  |
|-------------|------|-------------|------------|--------|----------|-----|------------|--|
| JH2016-071  | X1   | 新增规格        | 2016.06.10 | 陈少兵    | CHECK    | 郑小伟 | 2016.06.15 |  |
| 20151224001 | X    | NEW DRAWING | 2016.05.05 | 陈少兵    | APPROVAL | 吕海涛 | 2016.06.15 |  |
| ECN NO.     | REV. | DESCRIPTION | DATE       | CHANGE |          |     |            |  |