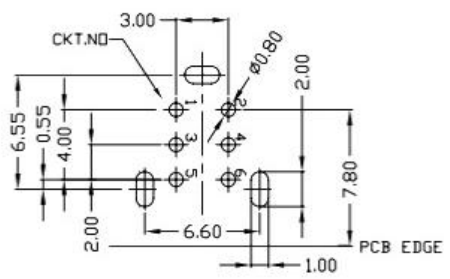
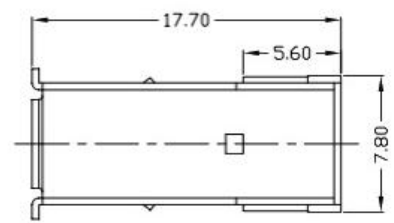
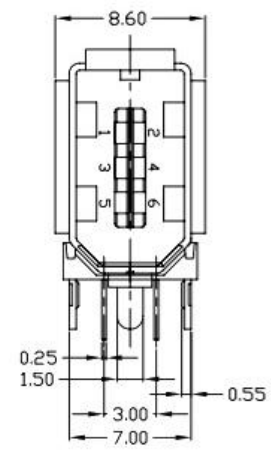
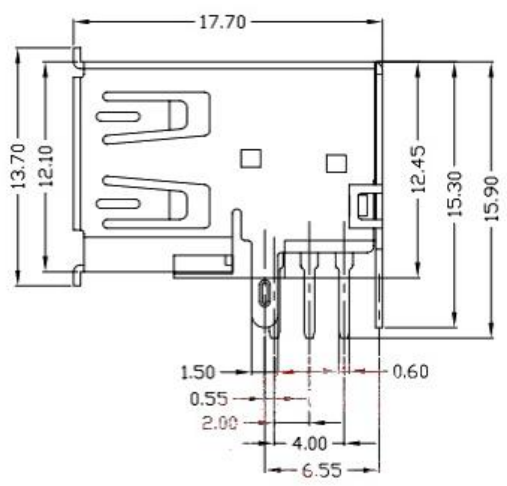


RoHS Compliant

- NOTES:
- ELECTRICAL:
 - VOLTAGE CURRENT RATING:1AMP,30V AC;
 - INSULATION RESISTANCE: 1000MΩMIN;
 - CONTACT RESISTANCE: 30mΩMAX;
 - WITHSTANDING VOLTAGE: 500V AC;
 - OPERATING TEMPERATURE:-55°C TO +85°C.
 - Mechanical:
 - Mating Force: 35N MAX
 - Unmating Force: 10N MIN.
 - DIMENSIONS MARKED '▼' TO BE CHECKED BY Q.C & IPQC.
 - PART NO.



RECOMMENDED PCB LAYOUT



⑤	MID PLATE	1	STAINLESS STEEL	Au . PLATING.	T=0.15mm
④	SHELL	1	STAINLESS STEEL	Au . PLATING.	T=0.30mm
③	TERMINAL-B	1	TABLE 2:	TABLE 2:	T=0.12mm
②	TERMINAL-A	1	TABLE 2:	TABLE 2:	T=0.12mm
①	INSULATOR	1	HIGH TEMP	Black	

UNLESS OTHERWISE, GENERAL TOLERANCE:		<h1 style="margin: 0;">广东科斯达开关厂</h1>			
X.xxx	±0.10				
X.xx	±0.20	USB connector		P/N: Detail See PART NO. LIST	
X.x	±0.30			MODEL:	
X.	±0.38	THIRD ANGLE PROJECTION		DRAW NO.:	
ANGULAR:				UNIT:	SCALE:
X.xx	±1°	mm	1:1	A4	1/1
X.x	±3°				
X.	±5°				

JH2016-080	X2	随工程图上升版本次	2016.06.15	陈少兵	DESIGN	陈少兵	2016.06.15	
JH2016-071	X1	新增规格	2016.06.10	陈少兵	CHECK	郑小伟	2016.06.15	
20151224001	X	NEW DRAWING	2016.05.05	陈少兵	APPROVAL	吕海涛	2016.06.15	
ECN NO.	REV.	DESCRIPTION	DATE	CHANGE				