

F

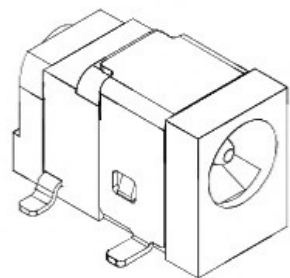
E

D

C

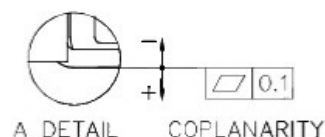
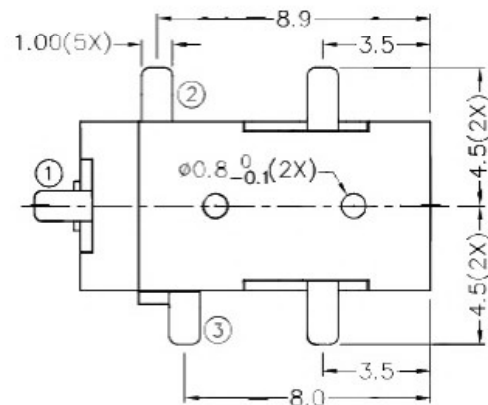
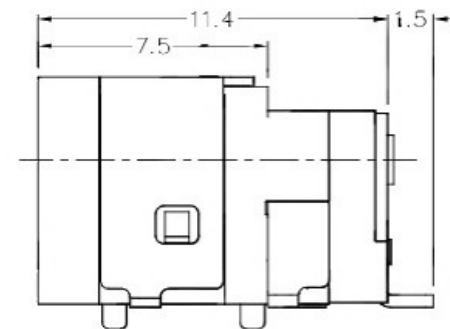
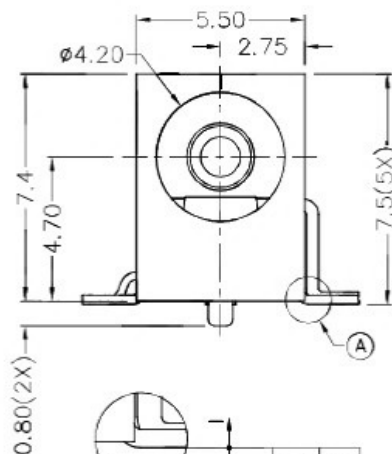
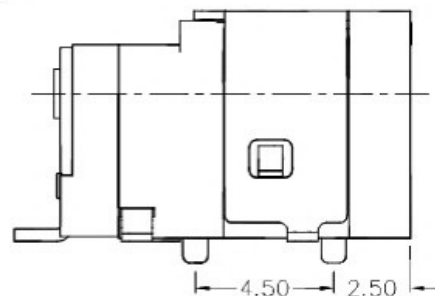
B

A



RoHS  
Compliant

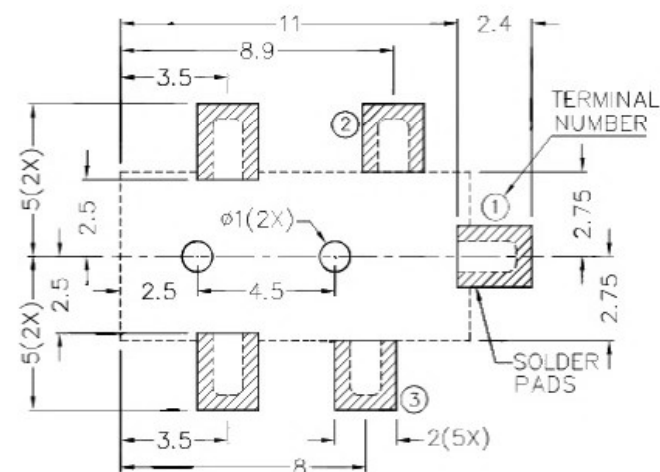
ZONE	SYMBOL	REVISION	APPROVAL	DATE
		ADJUST THE RECOMMENDED DC	J.X.KUANG	8-10-2019
		MATING PLUG		



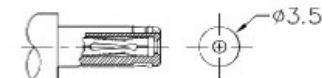
#### \* MATERIAL

CENTER PIN : COPPER  
 TERMINAL 1 : BRASS  
 TERMINAL 2 : COPPER ALLOY  
 TERMINAL 3 : BRASS  
 SHIELD : COLD ROLLED STEEL  
 HOUSING : HIGH TEMP. PLASTIC  
 COVER : HIGH TEMP. PLASTIC

SCHEMATIC	
CENTER PIN	$\phi 1.000\text{mm}$ $\phi 1.300\text{mm}$



RECOMMENDED PCB LAYOUT  
 TOLERANCE:  $\pm 0.05$   
 (TOP VIEW)



RECOMMENDED  
 DC MATING PLUG

广东科斯达开关厂

PART NAME	HIGH CURRENT SMD DC POWER SOCKET	TOLFRANCE UNLESS	0.0 $\pm$ 0.2 0.00 $\pm$ 0.1	UNIT:	
PART NO.		OTHERWISE SPECIFIED:	0.000 $\pm$ 0.05	mm	

DESIGN	T.Y.LI	DATE	15-9-2003	SCALE	4:1
DRAWING	H.Q.ZHOU	DATE	8-10-2019	MATERIAL	*
CHFC	H.L.TAN	DATE	8-10-2019	DWG. NO.	TZ\DC050DHS-A/1.1
APPROVAL		DATE		SHEET	

F

E

D

C

B

A