

F

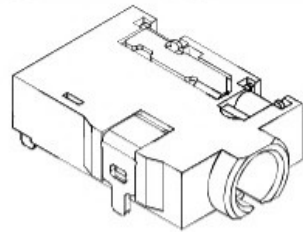
E

D

C

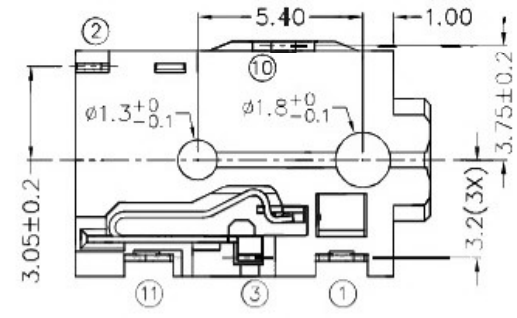
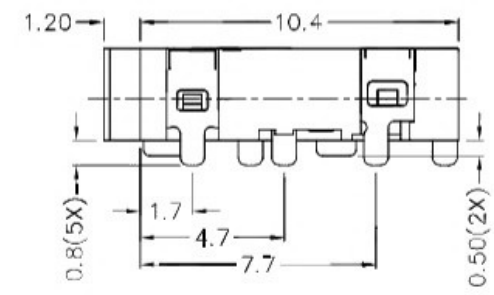
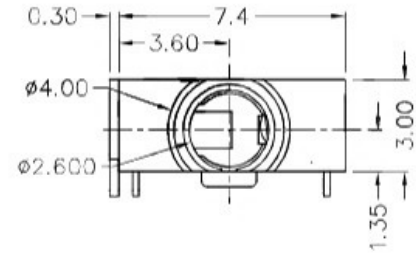
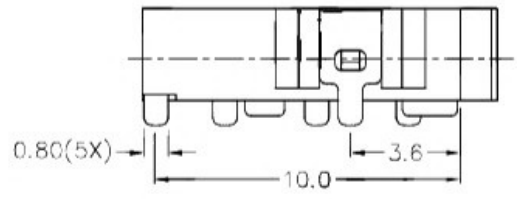
B

A

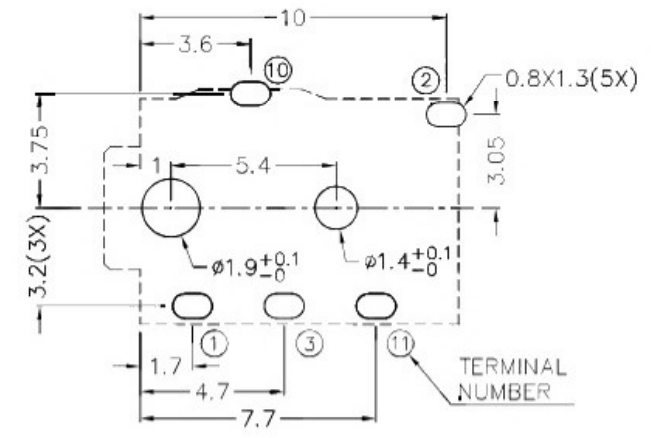


RoHS
Compliant

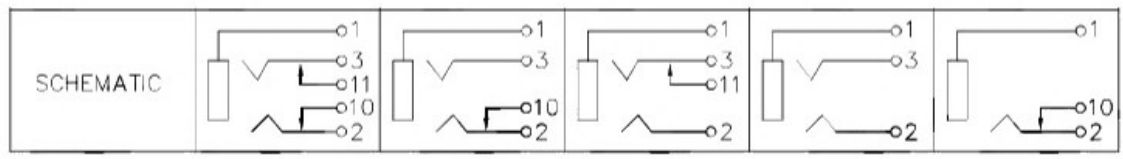
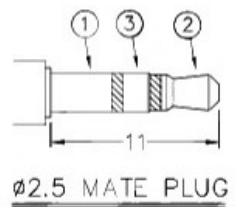
ZONE	SYMBOL	REVISION	APPROVAL	DATE



* MATERIAL
 TERMINAL 1 : COPPER ALLOY
 TERMINAL 2 : COPPER ALLOY
 TERMINAL 3 : COPPER ALLOY
 TERMINAL 10 : BRASS
 TERMINAL 11 : COPPER ALLOY
 HOUSING : HIGH TEMP. PLASTIC



RECOMMENDED PCB LAYOUT
 TOLERANCE: ±0.05
 (TOP VIEW)



广东科斯达开关厂

PART NAME	2.5mm STEREO JACK	TOLERANCE UNLESS 0.0±0.2 0.00±0.1 OTHERWISE SPECIFIED: 0.000±0.05	UNIT: mm	DESIGN	J.X.KUANG	DATE	1-10-2003	SCALE	4:1
				DRAWING	H.Q.ZHOU	DATE	2-3-2017	MATERIAL	*
PART NO.				CHECK	T.Y.LI	DATE	2-3-2017	DWG. NO.	TZ\TG274-A/1.0
				APPROVAL		DATE		SHEET	

F

E

D

C

B

A