

F

E

D

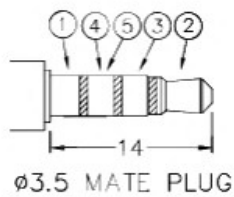
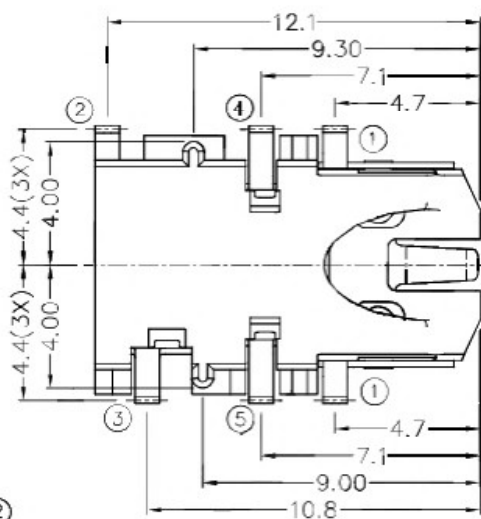
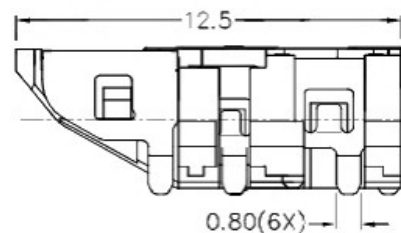
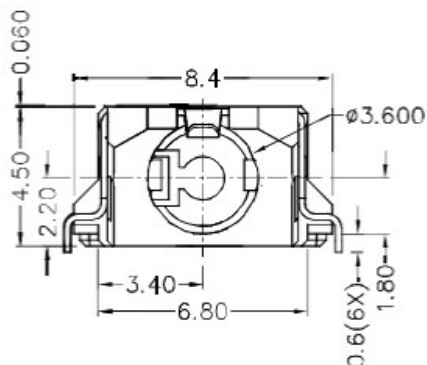
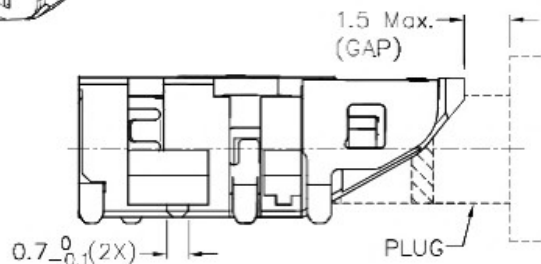
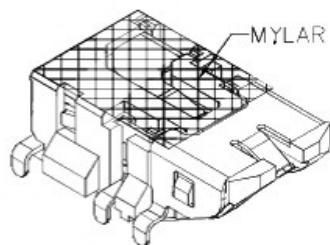
C

B

A

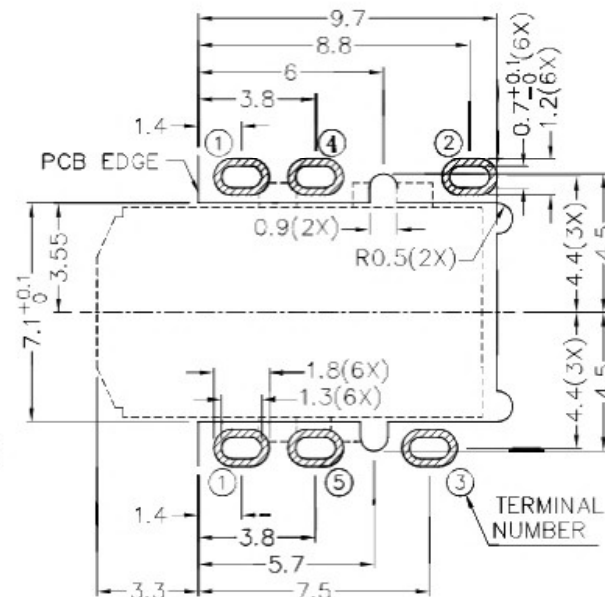
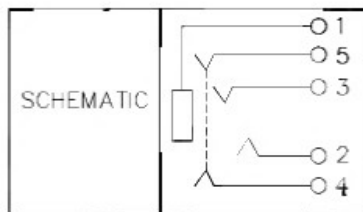
RoHS  
Compliant

ZONE	SYMBOL	REVISION	APPROVAL	DATE



\* MATERIAL


TERMINAL 1 : COPPER ALLOY  
 TERMINAL 2 : COPPER ALLOY  
 TERMINAL 3 : COPPER ALLOY  
 TERMINAL 4 : COPPER ALLOY  
 TERMINAL 5 : COPPER ALLOY  
 MYLAR : POLYIMIDE  
 HOUSING : HIGH TEMP. PLASTIC



RECOMMENDED PCB LAYOUT  
 TOLERANCE: ±0.05  
 (TOP VIEW)

 广东科斯达开关厂

DESIGN	T.Y.LI	DATE	31-10-2012	SCALE	4:1
DRAWING	J.H.ZHOU	DATE	7-2-2017	MATERIAL	*
CHECK	H.L.TAN	DATE	7-2-2017	DWG. NO.	TZ\SH561DT1-A/1.0
APPROVAL		DATE		SHEET	

PART NAME	3.5mm SMD STEREO JACK	TOLERANCE UNLESS	0.0±0.2	UNIT:	
PART NO.		OTHERWISE SPECIFIED:	0.00±0.1 0.000±0.05	mm	

F

E

D

C

B

A