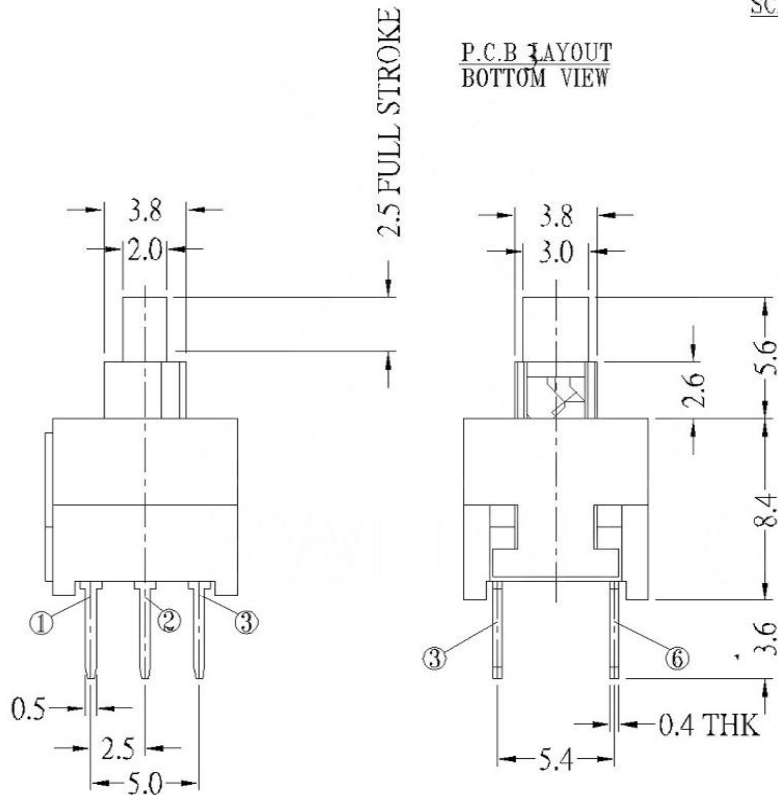


SCHEMATIC (NON-SHORTING)

P.C.B LAYOUT
BOTTOM VIEW



FEATURES

- Light operating force.
- Long term low contact resistance.
- Momentary or latching operation.
- Short stroke 2.0mm to latch.
- Compact spacing on PCB of 8.5mm.

SPECIFICATIONS

1.ELECTRICAL

| | |
|-------------------------|-------------------------|
| ● Contact rating | 0.1A, 30VDC |
| ● Contact resistance | 50mWMax. |
| ● Insulation resistance | 100MΩMin. at 250VDC |
| ● Dielectric strength | 250VAC Min. for 60 sec. |

2.MECHANICAL AND ENVIRONMENTAL

| | |
|----------------------|--|
| ● Temperature rating | Operating: -15°C to +55°C Storage: -25°C to +65°C |
| ● Operation force | 160±80gf |
| ● Stroke | Lock Stroke: 2.0±0.2mm Full Stroke: 2.5±0.2mm |
| ● Operating life | full load: 1x10 ⁴ cycles no load: 1x10 ⁵ cycles |
| ● Contact form | DPDT |

| | |
|-----------|------------------|
| OPERATION | W:NO LOCK Z:LOCK |
|-----------|------------------|

| ITEM | PAPT NAMF | TER,NO | QTY | MATERIAL | FINISHING | REMARK |
|------|----------------|--------|-----|-----------------|-------------------|--------|
| ⑦ | Contact | — | 2 | Phosphor bronze | Plating silvering | — |
| ⑥ | Terminal | — | 6 | Brass | Plating silvering | — |
| ⑤ | Spring | — | 1 | Sus | Natural | — |
| ④ | Base | — | 1 | Pbt | — | — |
| ③ | Crochet Needle | — | 1 | Sus | Natural | — |
| ② | Cover | — | 1 | Pom | — | — |
| ① | Keystake | — | 1 | Pom | — | — |

| | | | | | | | |
|------|--|------|--|----------------------------------|----------------------------------|--------------|----------------|
| DSND | | DATE | | SCALE: N/A | MODEL TYPE: KEY SWITCH | | |
| DWN | | DATE | | VIEW: | PART NO.: | | |
| CHKD | | DATE | | UNIT: mm | DWG NO.: | | |
| APPD | | DATE | | SIZE: A4 | XKB8585-X-140 | | |
| | | | | KOSOD TECHNOLOGY CO., LTD | WEIGHT 1.0g | SHEET 1/1 | REVISION A0 |

| MARK | DESCRIPTION | DATE | REVISED | APPROVED | UNSPECIFIED TOLERANCES |
|-------------------------------------|-------------|------|---------|----------|------------------------|
| ΔX | | | | | ANGULAR ±5° |
| ΔX | | | | | X.X ±0.2mm |
| ΔX | | | | | X.XX ±0.1mm |
| | | | | | X.XXX ±0.05mm |
| REVISIONS | | | | | |
| www.bodongkaiguan.net www.ksdkg.com | | | | | |