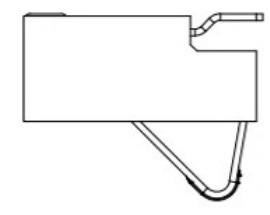
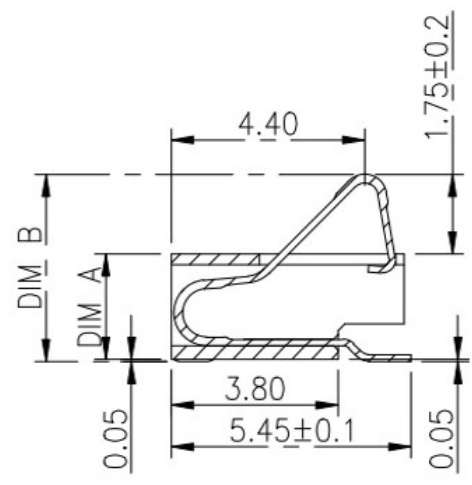
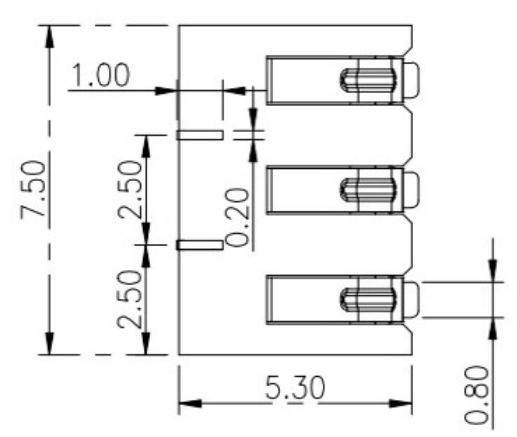
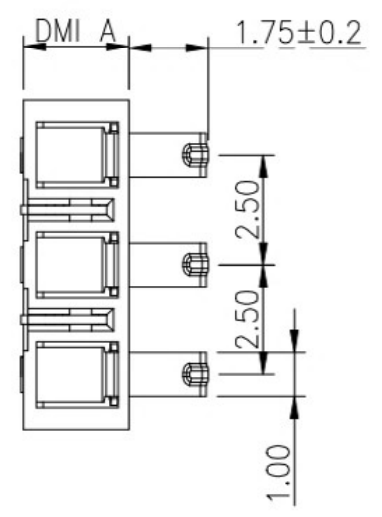


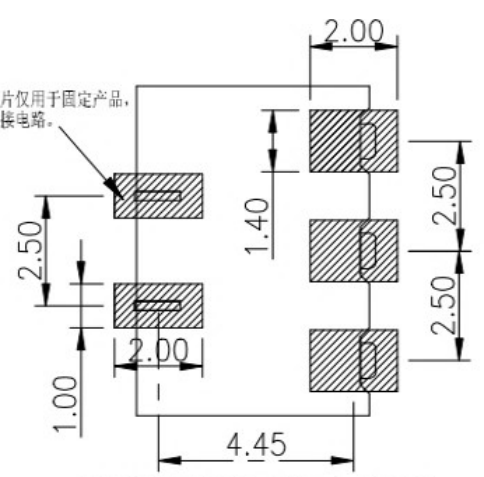
REV.	ECN NO.	DESCRIPTION	DESIGN	DATE
A		INITIAL	Kai	2018.03.29



DIM A	DIM B
2.4	4.2
3.0	4.8
3.5	5.3



此固定片仅用于固定产品，
请勿连接电路。



RECOMMENDED PCB LAYOUT
TOP VIEW (.XX±0.05)

性能：
额定电流：3.0A
额定电压：24V
耐电压：500V
接触电阻：30mΩ MAX
绝缘电阻：500MΩ
工作温度：-40℃~+85℃
塑件（材质）：LCP，耐高温260℃
接触点（材质）：铜合金，触点镀金3U'

②	HOUSING	1	LCP		BLACK
①	CONTACT A	2	PHOSPHOR BRONZE 0.20T	Au PLATED	
ITEM	PART NAME	Q'TY	MATERTAL	DESCRIPTION	REMARK

UNLESS OTHERWISE SPECIFED TOLERANCES

DECIMALS:

DIM	TOL
X.	±0.50
X.X	±0.30
X.XX	±0.20
X.XXX	±0.10

ANGLES:

DIM	TOL
X.	±2°
X.X	±1°
X.XX	-----
X.XXX	-----

广东科斯达电器开关厂

DWG NO.

DESIGN:

CHECK:

APPROVED

PART NAME:

PART NO.

REV. A

UNIT: mm

SHEET: 1/1